

## **Historic, Archive Document**

Do not assume content reflects current scientific knowledge, policies, or practices.



62.61

1  
9  
4  
3

FROM WORLD WIDE SOURCES

Gloeckner

FLOWER SEEDS

LIBRARY RECEIVED  
★ JAN 23 1943 ★  
U. S. Department of Agriculture



# "KEEP 'EM GROWING TILL THE BOYS COME MARCHING HOME"

**A**ND THAT—will be a full size assignment. Restrictions—and more restrictions. Labor—Heat—Transporation—all will be ever growing problems. But our business is essential. Just as essential, as ninety-six per cent, of all business. There are only four things in life that we actually need, Food—Clothing—Heat and a place to live. Of the ninety-six per cent of the nonessentials if you will, we offer most in the bolstering of morale and administering to the soul.

We officiate at marriage, welcome the new-born, cheer those that are ill. We brighten the Home both inside and out, through the years, and ease the sorrow at death. We should be proud of our profession. To state that it is non-essential is to say that the "American Way of Life" is wrong. Yet these are the things we are fighting to preserve.

Most every establishment has some one at the front. Your business, our business, has some one out there who thinks of the place where he may return. "SO WE MUST KEEP 'EM GROWING TILL THE BOYS COME MARCHING HOME".

Because of privations, our listings of Novelties, this year are few compared with other years. However, there are as many good standard items as usual that have been carefully chosen.

The name *Gloekner* has long been associated with the seed trade. We wish to identify it as a standard of Quality for many years to come. To accomplish this we pledge a consistent year after year supply to high quality seed.

This label, a facsimile of our current catalogue cover, with the year plainly marked, is attached to every package of seed, and is your guarantee that the seed therein is fresh from this year's crop.



Jrd. C.  
*Gloekner*  
&  
Company,  
Incorporated

Seeds . . . Plants . . . Bulbs  
From World Wide Sources  
15 East 26th St. New York City

War and blockade conditions have necessitated the elimination of some varieties of flower seeds from our 1943 list, and there may also be some items listed which we will be unable to supply. These will be reinstated as soon as conditions permit.

### BUSINESS TERMS

**2% 10 days 60 days net for customers of approved credit**

Prices in this Catalogue are subject to change without notice.

All goods are offered subject to Crop Failures, Shortage or other causes beyond our control, and to being unsold on receipt of order.

The prices in this catalogue are for the trade only. For your own protection do not loan this catalogue to anyone not entitled to Florists or Wholesale prices.

Unknown correspondents desiring to open an account are requested to furnish three trade references with whom they have had credit relations.

We, Fred C. Gloeckner & Co., Inc., give no warranty, expressed or implied, as to description, quality, productiveness or any other matter of any seeds, bulbs or plants we send out, and will not be responsible for the crop. If the purchaser does not accept the goods on these terms, they are at once to be returned.

**15 East 26th Street, "At Madison Square", New York**

**Telephones: LExington 2-4197 - 4198**

In addition to seed, *Gloeckner* bulbs, plants and cuttings are selected with diligent care as to type, productiveness and freedom from disease so you may have the best upon which to build your prospective crops.



## NOVELTIES AND RECENT INTRODUCTIONS OF MERIT

### DELPHINIUM PACIFIC STRAIN "PERCIVAL SERIES"

**PERCIVAL SERIES** . . . A companion to the Galahad series, of equally good quality. The large glistening white flowers with strongly contrasting Black Bees are beautifully spaced on long, tapering spikes. Very vigorous and free growing habit.

Trade Packet	¼ oz.	1 oz.
\$2.00	\$7.00	\$24.00

### MARIGOLD DWARF FRENCH HARMONY TYPE "SUNKIST"



Sun kissed and beauty laden, our latest addition to the Harmony type Marigold, Sunkist is a veritable gem in the garden galaxy of jewels. Rich, deep golden orange, the two inch blooms with their crested centers of dainty tubular petals surrounded by several rows of broad velvety self colored guard petals literally cover the tiny six to eight-inch mound-like plants. Early and free blooming, Sunkist adds a vibrant note of dazzling color to the border, garden bed, windowbox or flower pot. Combined with Butterball a striking effect can be achieved.

Trade Packet	¼ oz.	1 oz.
\$ .40	\$ .75	\$2.50

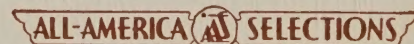


**MARIGOLD "BUTTERBALL"** is a lovely **soft butter yellow** in color. Its habit of growth is dwarf and compact attaining a height of about six to eight inches. The plants are almost covered with butter yellow blooms each petal of which is slightly touched with maroon at the tip.

Trade Packet	¼ oz.	1 oz.
\$ .25	\$ .50	\$1.75



### Marigold Dwarf "Melody"



**MARIGOLD "MELODY"** is of the Harmony type and has fully double **brilliant Orange** flowers. The Compact plants are about twelve inches tall. The blossoms on "Melody" appear very early and continue all summer and well into the fall. It will be useful for edging or massed effects in beds.

Trade Packet	¼ oz.	1 oz.
\$ .25	\$ .50	\$1.75



## NOVELTIES

## AND RECENT INTRODUCTIONS OF MERIT

## PRIMULA MALACOIDES SPRINGTIME

ANOTHER *Gloeckner* INTRODUCTION

**PRIMULA MALACOIDES SPRINGTIME** is one of the finest, strong growing, good colored, varieties ever offered. The color is an **attractive salmon pink** which does not fade with age. The flower stems are strong and support a profusion of good sized blooms. The foliage has good texture and is fairly resistant to rot, unlike many other varieties of Malacoides.

When seed of Springtime is sown in June it will make good flowering plants for January.

Seeds Available After June 1st

Trade Packet \$2.00

*Primula Springtime*

## ZINNIA STRIATA "THE CLOWN" (Bodger)

Reminiscent of the gay and happy character for which it is named, **THE CLOWN** is a new variegated colored Zinnia that is good for cutting. The plants are branched, 2½ feet tall, freely producing its medium sized blooms which are ideal for flower arrangements.

Trade Packet  
\$ .50¼ oz.  
\$ .751 oz.  
\$2.00

## PETUNIA RUFFLED GRANDIFLORA

## NANA COMPACTA MIXED

In this distinctly new type we are able to offer you this combination in one variety. The blooms are extra large, well ruffled with good open throats and are more of the dwarf Giants of California type in both form and size. This mixture contains a blend of striking colors ranging from **white to pink through rose to red, and includes many color combinations of pink and white with gold throats and red and white with dark throats.** We think this should be good for pot culture.

Trade Packet  
\$ .751/64 oz.  
\$1.251/32 oz.  
\$2.25*Siter's Rainbow Strain Cineraria*CINERARIA  
"Siter's Rainbow Strain"

(The Commercial Cineraria)

This new commercial Cineraria carries immense flower heads, is compact in growth, with small round leaves which require little room. These characteristics make it extremely profitable to grow. The medium large flowers in colors ranging from the bright eyed types, to the finer pastel shades, surpass anything previously introduced and are the outstanding feature of this strain. It is sure to please your most discriminating clientele and we are proud to offer this as a *Gloeckner* introduction.

ORIGINATOR'S PACKETS, \$2.00 EACH

# ANTIRRHINUM

## WINTER SNAPDRAGONS For Greenhouse Culture

Early flowering varieties of Antirrhinum have been developed through constant breeding. They are not the largest flowering but are of medium size which have been in favor with the retailer. For Spring flowering the varieties producing larger spikes should be grown. Seed should be sown late in June or early July for Winter flowering. High temperatures prohibit germination of the seed and one must, therefore, select a cool location for the seed flats.

Damping off is a serious problem and all precautions should be taken to avoid it. The soil should be sterilized with steam or other efficient measures, and after the seed germinates good circulation of air and very little watering will help to prevent this trouble. Experiments have shown that Snapdragons do better if the fertilizer content in the soil is not very high. This is one of the easiest crops to grow when planted in fresh soil and grown in a well ventilated cool greenhouse. SNAPDRAGON WILT may be caused by a single, soil-borne fungus, Verticillium which also causes Seidewitz Disease or wilt of Chrysanthemums. The only positive prevention for this disease lies in the exclusive use of sterilized soil, from the seed flats to the final potting or benching soil. Do not invite trouble by planting this crop in old 'mum soil unless it is first sterilized.

<b>PINK and ROSE</b>		Three
	Tr. Pkt.	Tr. Pkt.
<b>America</b> —Deep rose with Bronze lip .....	\$1.50	\$4.00
<b>Better Times</b>		
Brilliant cerise rose...	2.00	5.00
<b>Christmas Cheer</b>		
Shades of pink .....	2.00	5.00
<b>Cheviot Maid Supreme</b>		
Best deep rose .....	1.00	2.50
<b>Gilberts Pink Supreme</b>		
Beautiful deep pink...	1.50	4.00
<b>Jersey Maid</b> —Medium Pink with light shading .....	2.00	5.00
<b>Maiden's Blush</b>		
Apple Blossom .....	1.00	2.50
<b>Maid of Mars</b>		
Exceptionally fine clear pink .....	2.00	5.00
<b>Marie Louise</b>		
Seashell pink .....	1.50	4.00
<b>Mary Ellen</b>		
Early light rose pink	2.00	5.00
<b>Milady</b> —Bright pink....	1.00	2.50
<b>Maryland Pink</b>		
Early light pink .....	2.00	5.00
<b>New Cincinnati</b>		
Fine light pink .....	1.00	2.50
<b>Peggy Schumann</b> — Pink .....	2.00	5.00
<b>Radiance</b> —Pink .....	1.00	2.50
<b>Radiance Improved</b>		
Pink .....	1.50	4.00
<b>Rose Pink Cheviot Maid</b>		
Early flowering .....	1.00	2.50
<b>Rose Queen</b>		
Deep rose pink .....	1.00	2.50
<b>Shaffroth's Early Pink</b>		
Clear rose pink .....	2.00	5.00
<b>St. Louis Pink</b>		
Beautiful flesh pink	1.50	4.00
<b>Terry's Pink</b>		
Vivid deep rose .....	2.00	5.00
<b>Terry's Surprise</b>		
Improved		
Rose shaded orange	1.50	4.00

### LAVENDER

<b>Bertha Baur</b> , Lavender	1.50	4.00
<b>Lavender Rose</b> .....	2.00	5.00
<b>Windmill's Lilac</b>		
Excellent orchid color .....	1.50	4.00
<b>Schrock's Orchid</b> .....	1.00	2.50
<b>Schumann's Lavender</b>	2.00	5.00



<b>RED</b>		Three
	Tr. Pkt.	Tr. Pkt.
<b>Crimson Queen</b> .....	\$2.00	\$5.00
<b>Velvet Beauty</b> —Amer- ican Beauty Red .....	1.00	2.50

### YELLOW

<b>Carol Jean</b>		
Golden Yellow .....	2.00	5.00
<b>Ceylon Court</b> .....	1.00	2.50
<b>Coates Yellow Perfection</b> —Deep yellow ...	1.00	2.50
<b>Ethel</b> —Golden Yellow	1.50	4.00
<b>Klondyke Supreme</b>		
Deep Yellow .....	1.50	4.00
<b>Schumman's Yellow</b> ...	2.00	5.00
<b>Sunray</b> —Yellow .....	1.50	4.00
<b>Terry's Yellow</b> .....	2.00	5.00
<b>Yellow Cheviot Maid</b> ...	1.00	2.50
<b>Yellow Delight</b>		
Deep clear yellow...	1.50	4.00

### WHITE

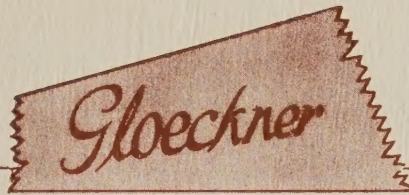
<b>Koesters White</b> .....	1.50	4.00
<b>Lucky Strike</b> .....	1.00	2.50
<b>Lucky Strike Improved</b>	1.50	4.00
<b>Marion White</b> .....	1.50	4.00
<b>Schaffroths Early</b>		
White .....	2.00	5.00
<b>Schlegels Early White</b>	1.50	4.00
<b>Terry's White</b> .....	2.00	5.00
<b>Westover</b>		
Fringed White .....	1.00	2.50
<b>White Cheviot Maid</b> ...	1.00	2.50
<b>White Prosperity</b> .....	1.50	4.00
<b>White Wonder</b>		
Pure white .....	1.50	4.00

### BRONZE and ORANGE

<b>Afterglow</b>		
Golden orange .....	1.00	2.50
<b>Bronze Christmas</b>		
<b>Cheer</b> —Early golden bronze .....	2.00	4.00
<b>Gilbert's Bronze</b>		
<b>Beauty</b> .....	1.50	4.00
<b>Glorious</b>		
Reddish bronze .....	1.00	2.50
<b>Miss Wooster</b>		
Dazzling rich dark bronze .....	1.00	2.50
<b>New Dawn</b>		
Golden orange .....	1.00	2.50
<b>New Deal</b> —Fragrant		
golden bronze .....	1.00	2.50
<b>Salmon Gold</b> .....	2.00	5.00
<b>Suntan</b> —Orange tan ...	1.00	2.50

WE CAN ALSO SUPPLY YOU WITH ANY VARIETY NOT LISTED ABOVE.





# ANTIRRHINUM

## SNAPDRAGONS

### STANDARD OUTDOOR RUST-RESISTANT STRAINS

#### MAXIMUM GRANDIFLORUM

	Tr. Pkt.	¼ Oz.	Oz.
Alaska—(Snowflake)—White .....	\$ .35	\$ .85	\$3.00
Copper Queen—Bronzy copper blending to antique gold at the nose .....	.35	.85	3.00
Crimson—Fiery Crimson .....	.35	.85	3.00
Indian Summer — Coppery Orange Scarlet .....	.35	.85	3.00
Loveliness—soft rose pink .....	.35	.85	3.00
Salmon Rose Shades .....	.35	.85	3.00
Swing Time—Rose pink .....	.35	.85	3.00
Yellow Giant—Deep yellow .....	.35	.85	3.00
Finest Mixed .....	.35	.85	3.00

#### MAJUS GRANDIFLORUM

	Tr. Pkt.	¼ Oz.	Oz.
Autumn Glow Shades— Old Rose suffused Amber .....	\$ .35	\$ .75	\$2.50
Fiery Red—Very brilliant .....	.35	.75	2.50
Harmony Shades—Terra cotta yellow, shaded rose.....	.35	.75	2.50
Orange Shades— Deep to light orange .....	.35	.75	2.50
Pinkie—Clear rose .....	.35	.75	2.50
Reveille—Deep luminous yellow .....	.50	1.50	
Rosalie—Rich deep rose; under- lying tone of topaz or amber .....	.35	.75	2.50
Salmon Shades— Salmon rose, pink shades .....	.35	.75	2.50
Shasta—Pure white .....	.35	.75	2.50
Wallflower Red .....	.35	.75	2.50
Yellow Jacket—Deep yellow .....	.35	.75	2.50
University of California Mixture .....	.30	.50	1.75

#### NANUM GRANDIFLORUM

	Tr. Pkt.	¼ Oz.	Oz.
Amber and Gold— Golden Amber, yellow lip.....	\$ .40	\$1.25	
Carmine Rose— Bright carmine rose .....	.25	.60	2.00
Gypsy Girl—Rich carmine with a splotch of golden yellow on the nose .....	.25	.60	2.00
Indian Girl—Old gold .....	.25	.60	2.00
Light Salmon Pink .....	.25	.60	2.00
Orange Pink— Orange suffused pink .....	.25	.60	2.00
Red Boy—Rich deep scarlet .....	.25	.60	2.00
Tangerine—Bronzy orange .....	.25	.60	2.00
Wildfire—Bright orange scarlet .....	.25	.60	2.00
Yellow Gem—Clear yellow .....	.25	.60	2.00
Finest Mixed .....	.25	.60	2.00

#### NANUM GRANDIFLORUM

(English Strain)—(Semi-Dwarf, Large Flowering)

	Tr. Pkt.	¼ Oz.	Oz.
Guinea Gold—Glowing bronzy orange with yellow throat .....	\$ .50	\$1.50	\$5.00
St. George — Beautiful shade orange cerise. Distinct from all other varieties .....	.50	1.50	5.00
Royal Rose—Deepest and richest rose imaginable. Must be seen to be fully appreciated .....	.50	1.50	5.00

#### ACROCLINIUM

This showy, free flowering annual is an excellent cut flower for the florist and well worth a trial.

	Tr. Pkt.	Oz.
New Large Flowered Double Hybrids Mixed .....	\$ .35	\$1.50

#### AGATHEA — BLUE DAISY

	Tr. Pkt.	Oz.
Coelestis—The lovely, free flowering blue Marquerite .....	\$ .25	\$1.25

#### AGERATUM

	Tr. Pkt.	Oz.
Blue Ball Improved—Dwarf and compact growth; uniform rich blue color .....	\$ .50	\$1.50
Blue Perfection—Dark blue .....	.15	.60
Little Blue Star— 3 inches high, fine for bedding .....	.25	2.00
Midget Blue—Very dwarf with delicate fine foliage; blue flowers—¼ Oz. .....	\$1.50	.50

#### ALYSSUM

We can highly recommend these strains of Alyssum. Of special merit is our selected strain of "Bouquet" which is considered one of the most dependable on the market.

	Tr. Pkt.	Oz.	¼ lb.
Bouquet—(Carpet of Snow) (Procumbens) best dwarf variety .....	\$ .15	\$ .75	\$2.25
Little Gem—Dwarf and compact .....	.15	.50	1.50
Sweet—(Maritimum) Trailing .....	.10	.20	
Snow Cloth—Plants are flat and a compact mass of pure white flowers .....	.25	.75	
Violet Queen—Dwarf compact, rich deep shades of violet .....	.25	1.00	

#### AMARANTHUS

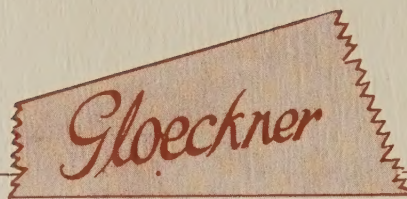
Highly ornamental foliage plant which attains a height of about four feet.

	Tr. Pkt.	Oz.
Molten Fire—Leaves are of iridescent Crimson.....	\$ .35	\$2.00

#### ASPARAGUS

(New Crop Seed ready in mid February)

	Seeds	Seeds	Seeds
	1,000	5,000	10,000
Plumosus Nanus .....	\$1.25	\$6.00	\$10.00
Sprengeri .....	1.00	4.50	8.00



# ASTERS

## BODGERS WILT RESISTANT STRAINS

### QUEEN OF MARKET

These well-known, early flowering Asters are of branching habit, about 20" tall, blooming in mid-July.

	Tr. Pkt.	¼ Oz.	Oz.
Dark Blue or Purple .....	.40	.50	1.75
Light Blue or Lavender .....	.40	.50	1.75
Peach Blossom—Flesh pink .....	.40	.50	1.75
Rose .....	.40	.50	1.75
White .....	.40	.50	1.75
Finest Mixed .....	.40	.50	1.75

### EARLY ROYAL BRANCHING

Plants branching, 1½-2 feet, blooming mid-August directly following the Queen of the market.

	Tr. Pkt.	¼ Oz.	Oz.
Azure Blue or Dark Lavender .....	\$ .40	\$ .50	\$1.75
Deep Rose .....	.40	.50	1.75
Peach Blossom—Lavender pink .....	.40	.50	1.75
Purple .....	.40	.50	1.75
Shell Pink .....	.40	.50	1.75
White .....	.40	.50	1.75
Finest Mixed .....	.40	.50	1.75

### AMERICAN BEAUTY

Blooms from August and continues until frost. The large and double flowers are produced on long heavy stems; plants 2 to 3 feet high.

	Tr. Pkt.	¼ Oz.	Oz.
Azure Fairy—Dark lavender .....	\$ .40	\$ .50	\$1.75
Crimson .....	.40	.50	1.75
Deep Rose .....	.40	.50	1.75
Purple .....	.40	.50	1.75
Purple Prince—(Black Prince)— deep marine violet .....	.40	.50	1.75
September Beauty—Shell pink .....	.40	.50	1.75
Silvery Rose .....	.40	.50	1.75
White .....	.40	.50	1.75
Mixed .....	.40	.50	1.75

### AMERICAN BRANCHING (Semple's)

Plants 2½ to 3 feet tall, branching, robust, flowers large, double and fine form. Our selected stocks of these are the best money can buy. Flowers late August and early September.

	Tr. Pkt.	¼ Oz.	Oz.
Azure Blue or Dark Lavender .....	\$ .40	\$ .50	\$1.75
Crimson .....	.40	.50	1.75
Peach Blossom .....	.40	.50	1.75
Purple .....	.40	.50	1.75
Rose .....	.40	.50	1.75
Shell Pink—(Mary Semple) .....	.40	.50	1.75
White—Extra select, long stems .....	.40	.50	1.75
Finest Mixed .....	.40	.50	1.75

### EARLY GIANT

The finest large flowered, heavy stemmed wilt resistant Aster yet developed. Flowers are of the large Giants of California type, while the plants are less tall, about 1½ feet in height. This class is early blooming, coming into flower by the first week in September.

	Tr. Pkt.	¼ Oz.	Oz.
Light Blue .....	\$ .50	\$ .75	\$2.50
Peach Blossom .....	.50	.75	2.50
Rose Marie—Rich rose .....	.65	1.25	3.00

### IMPROVED CREGO

Plants robust, branching about 2½ feet tall, flowers large, double and well formed, one of the finest varieties for all purposes. Blooming mid-August.

	Tr. Pkt.	¼ Oz.	Oz.
Azure Blue .....	\$ .40	\$ .50	\$1.75
Crimson .....	.40	.50	1.75
Deep Rose .....	.40	.50	1.75
Enchantress—Lively salmon rose.....	.40	.50	1.75
Light Blue—Lavender .....	.40	.50	1.75
Peach Blossom .....	.40	.50	1.75
Shell Pink .....	.40	.50	1.75
Purple or Dark Blue .....	.40	.50	1.75
White .....	.40	.50	1.75
Finest Mixed .....	.40	.50	1.75

### HASTENING THE FLOWERING OF ASTERS

To secure earliness in blooming of ASTERS out of doors it is necessary to illuminate the seedlings with additional light. Use 25-watt lamps suspended two feet above the bench and have them lighted from 6 P.M. to 10 P.M. for at least five weeks before planting, each lamp to cover sixteen square feet of area. The seed is normally sown in the middle of March and the additional illumination is started after the seedlings have been transplanted. This additional light is continued until the middle of May when the plants are planted out of doors.

The above treatment will increase the earliness of your crop by two to four weeks. The Early Royal Branching, American Branching and Improved Crego varieties will respond very satisfactorily to this treatment.



# ASTERS

## VARIOUS RESISTANT VARIETIES

	Tr. Pkt.	¼ Oz.	Oz.
<b>Ball White Early</b> —White crested center, branching 2 to 2½ feet. Mid-August .....	\$ .40	\$ .50	\$1.75
<b>Ball White Late</b> —White 2½ to 3 feet long stems. Early September .....	.40	.50	1.75
<b>Ball Deep Rose</b> — Bright deep rose 2½ to 3 feet branching Late August .....	.40	.50	1.75
<b>Ball Purple</b> —Deep bright purple 2½ to 3 feet branching. Late August .....	.40	.50	1.75
<b>Early Phlox Pink</b> — Clear light rose Pink 2½ to 3 feet. Late August .....	.40	.50	1.75
<b>Heart of France</b> — Bright red. Late August .....	.40	.50	1.75

## SUPER GIANT (Non-Resistant)

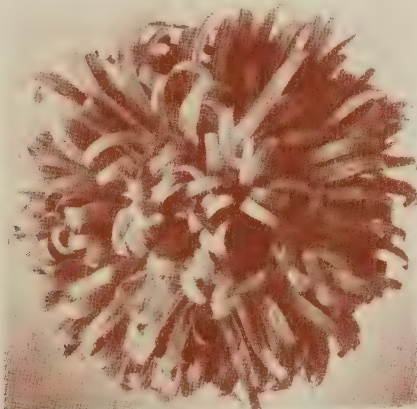
This is the largest and most fully double Aster class known. The flowers are full petaled, graceful interlacing. Plants about 2½ feet tall, with six to eight long, non-lateral stems per plant.

	Tr. Pkt.	¼ Oz.	Oz.
<b>El Monte</b> —Crimson .....	\$ .40	\$ .75	\$2.50
<b>Los Angeles</b> —Shell pink .....	.40	.75	2.50

## AURORA

A splendid free flowering Aster, with large flowers, quilled centers and outer band of broad petals. Height 2 feet, fine for cutting. Blooms late August.

	Tr. Pkt.	¼ Oz.	Oz.
<b>Golden Sheaf</b> —(wilt resistant) yellow self .....	\$ .40	\$ .50	\$1.75



Aster W. R. Crego



Aster W. R. American Beauty



Aster W. R. Early Royal

## PRINCESS TYPE (Wilt Resistant)

A very attractive new cutting type of wilt resistant Aster, 2'-2½' tall, branching and free flowering, early blooming, bearing quantities of flowers on strong stems. Flowers have a full deep crested center, surrounded by several rows of dainty plume-like guard petals. Blooms mid-August.

	Tr. Pkt.	¼ Oz.	Oz.
<b>Anne</b> —Peach blossom .....	\$ .50	\$1.00	\$3.00
<b>Bonnie</b> —Soft salmon rose.....	.50	1.00	3.00
<b>Marsha</b> —Rich cinnabar scarlet..	.50	1.00	3.00

## SINGLE CHINENSIS (Wilt Resistant)

Plant 1½ to 2 feet tall, flowers daisylike, petals wide and closely placed, blooms in late August.

	Tr. Pkt.	¼ Oz.	Oz.
<b>Carmin Rose</b> .....	\$ .20	\$ .35	\$1.25
<b>Flesh Pink</b> —Apple blossom.....	.20	.35	1.25
<b>Glare of the Garden</b> — Bright scarlet .....	.20	.35	1.25
<b>Lavender or Light Blue</b> .....	.20	.35	1.25
<b>Rose</b> .....	.20	.35	1.25
<b>White</b> .....	.20	.35	1.25
<b>Rainbow Mixture</b> —Special florist strain .....	.20	.35	1.25

## GIANT HARMONY TYPE (Non-Resistant)

Fine new florist type, long stems, basal branching, flowers with quilled centers, excellent colors. Blooms late August.

	Tr. Pkt.	¼ Oz.	Oz.
<b>Moonlight</b> —azure blue .....	\$ .50	\$ .75	\$2.50
<b>Morning Mist</b> —mid blue .....	.50	.75	2.50
<b>Sunrise</b> —soft apricot pink .....	.50	.75	2.50
<b>Mixed</b> .....	.50	.75	2.50



Begonia

**BEGONIA**

	Tr. Pkt.
<b>Darling</b> —Light rose flowers; compact growth.....	<b>\$1.00</b>
<b>Indian Maid</b> —Deep bronze, shiny leaf with red flowers.....	1.00
<b>King of the Reds</b> —Red flowers with green foliage. The dwarf habit of this begonia makes it suitable for pot plants or the border.....	1.00
<b>Luminosa</b> —Red .....	1.00
<b>Masterpiece</b> —Clear Rose Pink .....	1.00
<b>Prima Donna</b> —Carmine Rose .....	1.00
<b>White Lady</b> —Improved White Pearl.....	1.00
<b>White Pearl</b> .....	1.00
<b>Winter Romance</b> —Carmine Pink .....	1.00

**BEGONIA TUBEROUS ROOTED**

<b>Camelia Flowered Mixed</b> .....	Tr. Pkt. <b>\$1.00</b>
-------------------------------------	------------------------

**CALENDULA**

August sowing will flower from December to February; Early October sowing to follow Chrysanthemums will bloom in February and March; while January sowing will bloom in April and May.

	Tr. Pkt.	1/4 oz.	1/2 oz.	1/4 lb.
<b>Sensation or Campfire Improved</b> — Brilliant Orange; Scarlet Sheen .....	\$ .40	\$ .60	\$ 2.00	\$ 6.50
<b>Ball's Gold</b> — Long stemmed, large, deep golden yellow.....	.40	.60	2.00	6.50
<b>Ball Long Orange Improved</b> — Bright golden yellow with light eye. The extra large flowers and long stems make an outstanding variety .....	.40	.60	2.00	6.50
<b>Ball's Orange</b> —Glowing Orange .....	.40	.60	2.00	6.50
<b>Lemon Queen</b> —Deep lemon yellow with dark brown eye. Contrasting colors make this yellow variety very effective .....	.40	.60	2.00	6.50
<b>Ball's Supreme</b> — Orange with dark brown center; unusually free flowering.....	.40	.60	2.00	6.50
<b>Masterpiece</b> — Long stemmed, clear orange flower with dark center .....	.40	.60	2.00	6.50



Calendula

**CALCEOLARIA (Gilberts Strain)**

This is an improvement over the original Multiflora Nana type. Compact habit of growth; good selection of colors in the mixture; excellent foliage.

<b>Multiflora Nana Red</b> .....	Tr. Pkt. <b>\$1.00</b>
<b>Multiflora Nana Yellow</b> .....	1.00
<b>Multiflora Nana Mixed</b> .....	1.00

Remember that wilt of Calceolarias may be caused by a single, soil-borne fungus, Verticillium, which also causes Seidewitz Disease or wilt of Chrysanthemums. The only positive prevention for this disease lies in the exclusive use of sterilized soil, from the seed flats to the final potting or benching soil. Do not invite trouble by planting this crop in old 'mum soil unless it is first sterilized.

**CANTERBURY BELLS**

Annual Canterbury Bell which blooms from seed in less than six months. Plants 2 to 2 1/2 feet; bearing 6-8 flower spikes.

<b>Finest Mixed</b> .....	Tr. Pkt. <b>\$ .25</b>	1/4 oz. <b>\$ .50</b>	Oz. <b>\$1.50</b>
---------------------------	------------------------	-----------------------	-------------------



Candytuft Giant Hyacinth Flowered White

**CANDYTUFT**

Candytuft should be sown in flats in January and transplanted when the first leaves appear. Plant into the bench or bed about February 15th; grow in a temperature of 45 to 50 degrees and a good crop may be secured by Memorial Day. **Candytuft Giant Hyacinth Flowered White is the most satisfactory type for this method of culture.**

<b>Giant Hyacinth Flowered White</b> — A very superior strain growing 1 1/2 feet high with immense trusses of bloom. We believe it the finest strain to be had .....	Tr. Pkt. <b>\$ .20</b>	Oz. <b>\$ .75</b>	1/4 lb. <b>\$2.25</b>	Lb. <b>\$7.50</b>
--	------------------------	-------------------	-----------------------	-------------------

**CANDYTUFT UMBELLATA VARIETIES**

	Tr. Pkt.	Oz.	1/4 lb.		Tr. Pkt.	Oz.	1/4 lb.
<b>Crimson</b> —Purplish red .....	\$ .15	\$ .50	\$1.25	<b>Rose Cardinal</b> —Deep red .....	\$ .15	\$ .50	\$1.25
<b>Flesh</b> —Flesh Pink .....	.15	.50	1.25	<b>Rose</b> —Soft rose .....	.15	.50	1.25
<b>Lavender or Lilac</b> .....	.15	.50	1.25	<b>White</b> .....	.15	.50	1.25



**CALLIOPSIS DWARF**

This annual is very free flowering and recommended for bedding. If continued flowering is wanted old flowers must be removed.

	Tr. Pkt.	Oz.
<b>Golden Wave</b> —Golden yellows with red zone.....	\$ .15	\$ .25
<b>Dazzler</b> —Golden yellow with maroon center.....	.20	.50
<b>Dwarf Varieties Mixed</b> .....	.15	.30



*Carnation Enfant de Nice*

**CARNATION (Enfant de Nice)**

One of the best annual Carnations. Plants are strong, robust growers bearing flowers 2½ to 3 inches in diameter on good stiff stems. Do not expect over 75% to come true to color and 90% double flowers.

	Tr. Pkt.	¼ Oz.
<b>White</b> .....	\$ .50	\$3.00
<b>Salmon</b> .....	.50	3.00
<b>Rose</b> .....	.50	3.00
<b>Red</b> .....	.50	3.00
<b>Spectrum Red</b> —Intense Scarlet.....	.50	3.00
<b>Yellow</b> .....	.50	3.00
<b>Mixed</b> .....	.50	3.00

**CELOSIA PYRAMIDALIS**

	Tr. Pkt.	Oz.
<b>Flame of Fire</b> —Fine dwarf type. Fiery red.....	\$ .50	\$3.00
<b>Fiery Feather</b> —Similar to Flame of Fire, but taller and with somewhat smaller plumes more freely produced.....	.40	2.50
<b>Golden Feather</b> —Habit same as Fiery Feather, but with golden yellow plumes.....	.40	2.50
<b>Pride of Castle Gould</b> —3 to 4 ft. Mixture of yellow, orange and red shades.....	.40	2.00
<b>Thompsonii Magnifica Finest Mixed</b> —Excellent Strain.....	.35	2.25

**CELOSIA CRISTATA (Dwarf Cockscomb)**

	Tr. Pkt.	Oz.
<b>Dwarf Golden Yellow</b> .....	\$ .30	\$2.00
<b>Dwarf Empress</b> —Deep scarlet, bronzy green foliage.....	.30	2.00

**CENTAUREA (Dusty Miller)**

For Borders, Vases, Baskets, etc.

	Tr. Pkt.	Oz.
<b>Candidissima</b> —Silvery Gray foliage.....	\$ .25	\$1.50
<b>Gymnocarpa</b> —Fine silvery foliage.....	.20	.50

**CENTAUREA GIANT IMPERIALS**

Excellent for cut flowers

	Tr. Pkt.	Oz.		Tr. Pkt.	Oz.
<b>Brilliant Rose</b> .....	\$ .20	\$.60	<b>Delicate Lilac</b> .....	\$ .20	\$.60
<b>Deep Lavender</b> .....	.20	.60	<b>Yellow</b> .....	.20	.60

**CENTAUREA (Various)**

	Tr. Pkt.	Oz.
<b>Americana Lilac</b> —Thistle-like blooms of a rosy-lavender color. Splendid for cutting.....	\$ .15	\$.50
<b>Americana White</b> —White form of the above.....	.15	.50
<b>Suaveolens</b> —(Yellow Sweet Sultan or Grecian Cornflower), Very showy large bright yellow flowers; sweetly scented and a popular sort for cutting; lasting well.....	.15	.45

**CENTAUREA CYANUS (Cornflower)**

Listed below are the finest improved Florist strains of Centaurea Cyanus. The flowers are large, fully double and the colors intensified. The extra long stems of this strain make them excellent for cut flower purposes. Responds to additional light. Wilt of Centaurea Cyanus may be caused by a single soil born fungus or Verticillium which also causes Seidewitz disease or wilt of Chrysanthemums. The only prevention for this disease lies in the exclusive use of sterilized soil from the seed flats to the finished pot or bench soil. Do not invite trouble by planting this crop in old mum soil unless it is first sterilized.

	Tr. Pkt.	Oz.	¼ lb.	Lb.
<b>Blue Boy</b> —Excellent for forcing.....	\$ .15	\$.40	\$1.25	\$4.50
<b>Pinkie</b> —Deep Pink.....	.15	.40	1.25	4.50
<b>Red Boy</b> —Deep Red.....	.15	.40	1.25	4.50
<b>White</b> .....	.15	.40	1.25	4.50

**CHRYSANTHEMUMS (Annual)**

Another group which is finding favor with florists for cut flower material. Chrysanthemums last remarkably well as a cut flower, but for best results, keep them in water for 24 hours before marketing. Sow in mid August to follow early Chrysanthemums. Responds very well to additional light.

	Tr. Pkt.	Oz.
<b>Burridgeanum</b> —White with Crimson and Yellow Ring.....	\$ .15	\$.30
<b>Eastern Star</b> —Light Yellow.....	.15	.30
<b>Eldorado</b> —Bright yellow with dark brown disc. One of the best.....	.15	.30
<b>Morning Star</b> —Primrose Yellow.....	.15	.30
<b>Evening Star</b> —Sunflower Yellow.....	.15	.30
<b>Northern Star</b> —Pure White with Yellow Zone.....	.15	.30
<b>W. E. Gladstone</b> —Purple, Crimson and Yellow Zones.....	.15	.30



*Chrysanthemum*



# CINERARIA



*Siter's Rainbow Strain Cineraria*

**Siter's Rainbow Strain**—This Cineraria carries immense flower heads, is compact in growth and has small round leaves. The medium large flowers range in colors from the bright-eyed types to the finer pastel shades.

Originator's Packets \$2.00 each

**Cremer's Prize Strain**—This strain has been greatly improved by the originator—has small foliage that is wilt-proof with tremendous heads of flowers of the brightest colors.

Tr. Pkt., \$1.50    1/32 oz., \$4.00    1/16 oz., \$8.00

Positively do not use soil that was previously used for Mums and especially so if your Mums were affected with Verticillium wilt or Seidewitz disease. CINERARIAS are attacked by this wilt which is a soil born fungus. It will cause the lower leaves to wilt and die and then gradually kill the entire plant. The only prevention for this trouble is to use new field soil from seed flats to finished pot. If you do use old chrysanthemum soil be sure to sterilize it. **TO BE ON THE SAFE SIDE IT IS RECOMMENDED TO STEAM STERILIZE ALL SOILS BEFORE USING.**

## CLARKIA (Elegans Double)

For spring flowering sow in early January and grow in shallow soil in flats or benches. Keep plants on the dry side as vigorous growth is not wanted.

	Tr. Pkt.	Oz.
<b>Alba</b> —The best white .....	\$ .20	\$ .65
<b>Brilliant</b> —Bright deep rose. Very good color .....	.20	.65
<b>Enchantress</b> —Light salmon-pink .....	.20	.65
<b>La France</b> —Light salmon-pink .....	.20	.65
<b>Orange King</b> — Large, fully double Orange-scarlet. Excellent market variety .....	.20	.65
<b>Salmon Queen</b> —Medium light salmon-pink .....	.20	.65
<b>Scarlet Queen</b> —Glowing scarlet .....	.20	.65
<b>Mixed</b> .....	.20	.65

## COBAEA SCANDENS

(Cup and Saucer Vine)

	Tr. Pkt.	Oz.
<b>Blue</b> .....	\$2.25 ¼ lb.	\$ .15 \$ .60
<b>White</b> .....	.20	.80

## CUPHEA (Cigar Plant)

	Tr. Pkt.	Oz.
<b>Firefly</b> — Fiery cerise red with small delicately formed flower produced on compact plants .....	\$ .50	

## CYNOGLOSSUM

	Tr. Pkt.	Oz.
<b>Blue Bird</b> —Bright Blue .....	\$ .20	\$1.00
<b>Firmament</b> —Flowers of rich vivid Indigo Blue, bushy, base branching, compact habit .....	.35	1.75

## COSMOS

Hybrida Early Klondyke

	Tr. Pkt.	Oz.
<b>Orange Flare</b> — single early flowering		
Orange .....	\$ .25	\$ .75

### Sensation

<b>Pinkie</b> —Delightful rose pink .....	.25	1.00
<b>Purity</b> —Glistening White .....	.25	1.00
<b>Crimson</b> — Deep red selection of Sensation .....	.25	2.50
<b>Mixed</b> .....	.25	1.00

### Peerless Type or Double Sensation

This new double type Cosmos is of the Sensation type form of flower. It is early flowering and a heavy producer of flowers continuing to bloom over a long period.

	Tr. Pkt.	¼ oz.
<b>Pink Lady</b> —Delicate salmon pink .....	\$ .35	\$2.00
<b>White Cloud</b> —Beautiful soft velvet white .....	.35	2.00

### Extra Eearly Double Crested or Anemone Flowered

	Tr. Pkt.	Oz.
<b>Crimson King</b> —(Carnelia) .....	\$ .35	\$2.00
<b>Pink Beauty</b> —(Peach Blossom) .....	.35	2.00
<b>White Queen</b> —(Whirlwind) .....	.35	2.00
<b>Finest Mixed</b> .....	.35	2.00

### Single Early

<b>Crimson</b> .....	.15	.40
<b>Pink</b> .....	.15	.40
<b>White</b> .....	.15	.40
<b>Mixed</b> .....	.15	.40

### Late Mammoth Single

<b>Lady Lenox Pink</b> .....	.15	.30
<b>Crimson</b> .....	.15	.30
<b>Lady Lenox White</b> .....	.15	.30



# DELPHINIUM PACIFIC STRAIN Vetterle & Reinelt

WE SUPPLY ONLY THE ORIGINATOR'S STRAIN

This is the finest strain of Delphinium yet introduced. From our personal observations in the field, we find this has unquestionably proven to be the leader in Delphiniums of the better type. The flowers are immense in size, well set on strong, straight stems, do not shatter, and are 60 to 80% mildew resistant.

July or August sowing and transplanting into the field during the fall will produce an early crop with large spikes. Delphinium's require a well drained soil, neutral in reaction. January sowing will produce flowers during the summer.

### PERCIVAL SERIES (New)

A Companion to the Galahad Series. Large **glistening white** flowers with strongly contrasting **black bee**.

Tr. Pkt.	1/4 oz.	Oz.
\$2.00	\$7.00	\$24.00

### BLUE BIRD SERIES

This series can be recommended as being the **clearest medium blues with white bees**. They carry well formed round flowers 2 1/2 inches in diameter on very long, graceful spikes.

### CAMELIARD SERIES

A **pure lavender self**, with **white bee**, individual flowers, are very round and flat. Excellent growing habits.

### ROUND TABLE SERIES

This represents **all the color combinations of the Knights and their Ladies** which will eventually be introduced. Some three hundred different crosses were used to make up this group.

### BLUEJAY SERIES

Color striking. **Clear medium to dark blue**. Very intense and alive with contrasting bee.

Tr. Pkt.	1/4 oz.	Oz.
\$1.25	\$4.50	\$14.00

	Tr. Pkt.	1/4 oz.	1 oz.
Light Blue Shades .....	\$1.00	\$3.50	\$12.00
Dark Blue Shades .....	1.00	3.50	12.00
Dark Pastel Shades—Consists of Dark Violet, Light Violet and Blue Violet .....	1.00	3.50	12.00



### GALAHAD SERIES

Flowers **Clear White**, averaging three inches in diameter, pyramidal spikes, good branching habit, strong whippy stems with a high percentage of mildew resistance.

Tr. Pkt.	1/4 oz.	Oz.
\$1.50	\$5.00	\$16.00

### BLACK KNIGHT

The individual florets, 2 to 3 inches in diameter, are **Dark Purple**, beautifully rounded form with heavy velvety texture. Very large well formed spikes.

### KING ARTHUR SERIES

**Brilliant Royal Violet** with **large white bee**. Individual florets 2 1/2 inches in diameter. Excellent for cut flowers. Mildew resistance from 80 to 90%.

### GUINEVERE SERIES

**Light Pink Lavender self** with **white bee**. Individual florets 2 1/2 to 3 inches in diameter. For cut flowers and show purposes. Mildew resistance—50 to 70%.

### SUMMER SKIES SERIES

**Clearest Light Blue** with **white bee**. Individual florets 2 to 2 1/2 inches in diameter. Ideal for cut flower purposes. Mildew resistance—40 to 60%.

Tr. Pkt.	1/4 oz.	Oz.
\$1.25	\$4.50	\$14.00

	Tr. Pkt.	1/4 oz.	1 oz.
Lavender Pastel Shades — Consists of Lavender, Lavender Pastel and Lilac .....	\$1.00	\$3.50	\$12.00
White .....	1.00	3.50	12.00
Pacific Hybrids Mixed .....	1.00	3.50	12.00

## OTHER STRAINS

	Tr. Pkt.	Oz.
Blackmore & Langdon Strain .....	\$ .50	\$3.00
Cliveden Beauty (Improved Belladonna)—Select strain. Turquoise Blue .....	.40	2.75
Bellamosum—Dark Blue. Of Belladonna habit of growth.....	.40	2.75
Gold Medal Hybrids—Large flowering. Tall.....	.25	1.50
Lamartine—Fairly deep bright marine blue. Excellent cut flower habit .....	.50	5.00
Wrexham Hybrids—Blending of light and dark shades.....	.50	6.00

## CHINENSIS

	Tr. Pkt.	Oz.
Alba—Pure white .....	\$ .35	\$2.00
Cambridge Blue .....	.35	2.00
Liberty Larkspur—Dark Blue.....	.35	2.00
Finest Mixed .....	.15	.75

For Complete list of Vegetable Seed see Pages 34, 35 and 36



**DAHLIAS**



*Dahlia Unwin's Dwarf Hybrids*

These are easy to raise from seed and are overlooked by many florists. Vast improvements have been made in these strains which come remarkably true to type and height. They are early flowering, blooming profusely the same year they are sown.

For small pot plant sales in the spring the seed should be started during January or February. To produce four inch pot plants for Mothers' Day sow the seed in November.

<b>Unwin's Dwarf Ideal Bedding Mixed</b> —Early flowering semi-double, 18 inches tall in a wide range of colors .....	Tr. Pkt. <b>.50</b>	Oz. <b>\$2.50</b>
<b>Coltness Hybrids</b> —Dwarf single type; very free flowering; height 2 feet; choice mixed colors.....	<b>.40</b>	<b>2.50</b>

**DIDISCUS**

Responds to additional light	Tr. Pkt.	Oz.
<b>Coerulea</b> —(Blue Laceflower) .....	<b>\$.25</b>	<b>\$1.00</b>

**DIMORPHOTHECA (African Daisy)**

<b>Aurantiaca</b> —Golden Orange. Splendid for cutting; well adapted for forcing.....	<b>.25</b>	<b>1.00</b>
<b>Aurantiaca Hybrid Mixed</b> .....	<b>.20</b>	<b>.75</b>

**Double Hybrids Mixed**—These Dimorphothecca range in color from deep salmon orange to white with many intermediate shades. Plants grow about eight inches tall and about fourteen inches in diameter. Individual flowers are large and have a crested center. ¼ oz., **\$3.00** — Tr. Pkt. **\$.50**.

**DRACAENA**

<b>Australis</b> —Broad leaved variety.....per ¼ lb.,	<b>\$2.50</b>	Tr. Pkt. <b>.20</b>	Oz. <b>.85</b>
<b>Indivisa</b> —Narrow green leaves. The popular kind for bedding or vases.....lb.,	<b>\$4.00</b> , per ¼ lb.,	<b>\$1.25</b>	<b>.15 .40</b>

**EUPHORBIA**

<b>Heterophylla</b> —(Annual Poinsettia) .....	<b>.15</b>	<b>.50</b>
<b>Variegata</b> —(Snow on the Mountain).....	<b>.15</b>	<b>.30</b>

**FEVERFEW (Matricaria)**

<b>Double White</b> —Excellent for cut flowers.....¼ oz.,	<b>\$1.75</b>	<b>.50</b>
<b>Golden Ball</b> —Yellow .....	<b>.40</b>	<b>2.00</b>

**GAILLARDIA PICTA**

<b>Indian Chief</b> —Single bronzy red.....	<b>.15</b>	<b>.50</b>
<b>Double Lorenziana</b> —Finest mixed .....	<b>.15</b>	<b>.40</b>
<b>Single Mixed</b> .....	<b>.15</b>	<b>.40</b>



*Dimorphothecca Aurantiaca*

**GOMPHRENA (Globe Amaranth)**

Splendid everlasting, excellent for bedding

<b>Globosa Rubra</b> .....	Tr. Pkt. <b>\$.15</b>	Oz. <b>\$.35</b>
----------------------------	-----------------------	------------------

**GOURDS (Ornamental)**

<b>Cave Man's Club</b> —Knobby, club shaped, dark green .....	<b>.15</b>	<b>.50</b>
<b>Large Varieties Mixed</b> .....	<b>.15</b>	<b>.25</b>
<b>Small Varieties Mixed</b> .....	<b>.15</b>	<b>.25</b>
<b>Warted</b> —Mixed colors and shapes.....	<b>.15</b>	<b>.30</b>
<b>La Montagne Silver Medal Strain</b> — (originators seed)—Considered one of the best strains.....	<b>.35</b>	<b>1.50</b>

**GREVILLEA (Silk Oak)**

March sowing will make a good sized specimen by fall. June sowing will make 2¼ inch pot plants ideal for use in panning poinsettias.

<b>Robusta</b> —A splendid foliage plant; makes an ideal base for made-up holiday baskets; easily raised from seed .....	<b>.25</b>	<b>.85</b>
--	------------	------------



*Didiscus Coeruleus*



**GLOXINIA**

From the time the seed is sown six months is required to mature this plant.

**Mixed**—This mixture consists of the most desirable Florist strains of the flexible leaf type Tr. Pkt. \$1.00

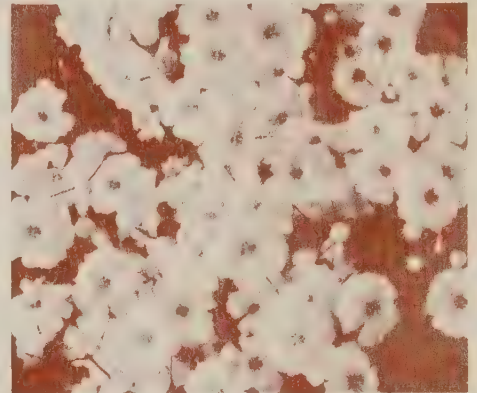
**GYPSOPHILA (Baby's Breath)**  
(Annual)

Free blooming plants of easiest culture. Desirable for cutting to mix with other flowers.

	Oz.	1/4 lb.	1 lb.
<b>Convent Garden Strain</b> —Pure White	\$.25	\$.60	\$1.75
<b>London Market Improved</b>	.20	.60	1.60
<b>Paris Market</b> —White	.15	.40	1.00

**HELIANTHUS (Double Sunflower)** Tr. Pkt. Oz.

**Sun Gold**—Brilliant golden yellow, large double flowers, free flowering, 100% double; 4 to 5 feet tall. Fine for large basket work. Well worth a trial \$ .15 \$ .50



*Gypsophila London Market Improved*



*Helianthus Sun Gold*

**HELICHRYSUM MONSTROSUM**  
(STRAW FLOWER)

	Tr. Pkt.	Oz.
<b>Canary Yellow</b>	\$ .15	\$ .60
<b>Crimson</b>		
<b>Fireball or Scarlet</b>		
<b>Goldenball</b>		
<b>Rose Carmine</b>		
<b>Rose Queen</b>		
<b>Salmon Queen</b>		
<b>Silverball</b>		
<b>Silvery Pink</b>		
<b>Violet Queen</b>		
<b>Finest Mixed</b>		

**IPOMEA**

	Tr. Pkt.	Oz.
<b>Clark's Mammoth Blue</b> —(Heavenly Blue Improved)— plant in a dry sandy location and never apply fertilizer <span style="float: right;">1/4 lb., \$2.00</span>	\$ .25	\$ .75
<b>Cornell</b> —Carnelian red bordered white, free blooming	.30	1.75
<b>Pearly Gates</b> —(New)—Lovely Lustrous White with creamy shading deep down in the throat	.35	1.75
<b>Scarlett O'Hara</b> —Rich dark wine red or deep rosy crimson	.30	1.50
<b>Noctiflora</b> —(Moonflower)—Flowers at night <span style="float: right;">1/4 lb., \$1.00</span>	.15	.40

**KALANCHOE**

For Christmas flowering shade the plants with black cloth from September 1st to October 10th from 5 P.M. to 8 A.M. each day and grow in a 60 degree house:

<b>Blossfeldiana</b> —A succulent pot plant that is of very easy cultivation; in form the flowers are similar to Bouvardia and in color a very bright scarlet <span style="float: right;">3 Tr. Pkts. \$2.50</span>	\$1.00
<b>Tom Thumb</b> —A dwarf strain of Blossfeldiana. Ideal for pot plants. For best results sow seed in January. <span style="float: right;">1/32 oz., \$9.00</span>	2.50 \$5.00

**KOCHIA**

(Summer Cypress or Mexican Fire Bush) Tr. Pkt. Oz. \$ .10 \$ .20

**Childsi**—Improved strain

**LILIUM**

**Lilium Longiflorum praecox White Queen.** Tr. Pkt. 1/8 oz. \$1.00 \$1.75  
Remarkably quick in blooming 12-15 months, pure white

**LINARIA**

Excellent for combination work. Resembles a miniature snapdragon. When sown in January will make good material for combination pots for Mothers' Day.

**Fairy Bouquet**—Pastel shades; compact growing Tr. Pkt. Oz. \$ .20 \$1.25

**LUNARIA (Honesty)**

**Biennis Alba**—Silvery seed pods Tr. Pkt. Oz. \$ .20 \$ .60

**LUPINUS (Annual)**

**New Giant King**

A new improved strain. 3 to 4 ft. tall. King Lupinus have the base branching habit, with four to six long spikes to the plant. Each spike has from 25 to 50 more blooms than the Hartwegii type. The blooms are also a little larger. Sow seed in early October in pots and follow Chrysanthemums; will bloom in April and May.

	Tr. Pkt.	Oz.
<b>King Blue</b> —Oxford Blue	1/4 lb. \$1.50	\$.20 \$ .60
<b>King Sky Blue</b> —Light Blue	1/4 lb. 1.50	.20 .60
<b>King Heliotrope</b> —Rosy purple	1/4 lb. 1.50	.20 .60
<b>King White</b> —Pure White	1/4 lb. 1.50	.20 .60
<b>King Mixed</b>	1/4 lb. 1.50	.20 .60

**LUPINUS HARTWEGII**

	Tr. Pkt.	Oz.
<b>Sky Blue</b>	1/4 lb. \$1.00	\$.15 \$ .30
<b>Rich Blue</b>	1/4 lb. 1.00	.15 .30
<b>White</b>	1/4 lb. 1.00	.15 .30
<b>Pink</b>	1/4 lb. 1.00	.15 .30



*Ipomea Cornell*

**LOBELIA**

Sow Early to Get Best Results

	Tr. Pkt.	Oz.
<b>Blue Gown</b> —Clear deep blue without eye, compact habit	\$ .40	\$2.75
<b>Blue Stone</b> —Dwarf bright blue, compact habit	.40	2.75
<b>Cambridge Blue</b> —Light Blue; large flowers, green foliage; compact	.40	3.00
<b>Crystal Palace Compacta</b> —Dwarf, dark blue; dark foliage	.35	2.00
<b>Emperor William</b> —Dwarf, clear blue without eye	.25	2.00
<b>Mrs. Clibran Imp.</b> —Dwarf blue, white eye	.40	3.00
<b>Sapphire</b> —Deep blue, white eye, trailing	.35	2.00



# ANNUAL LARKSPUR

## GIANT IMPERIAL or BASE BRANCHING

Tall, upright compact, basal branching in habit, the Giant Imperials have superseded all other types of Larkspurs for florists' and general garden use. The delphinium like spikes or double flowers, carried on stems 4' - 5' long, are compactly placed on the upright growing plants, requiring only about one-half the space needed for the old stock flowered type of Larkspur.



Larkspur

	Tr. Pkt.	Oz.	Lb.
Blue Bell—Azure blue .....	\$.25	\$1.00	\$10.00
Blue Spire—Very deep violet blue .....	.25	1.00	10.00
Carmine King—Deep carmine rose .....	.25	1.00	10.00
Coral King—Coral pink white shaded .....	.25	1.00	10.00
Daintiness—Delicate lavender .....	.25	1.00	10.00
Dazzler—Rich scarlet .....	.25	1.00	10.00
<b>Exquisite Pink Improved</b>			
Soft pink shaded salmon .....	.25	1.00	10.00
Exquisite Rose—Rose pink .....	.25	1.00	10.00
Gloria Improved—Deep Salmon Rose .....	.25	1.00	10.00
Lilac King—Rich lilac, fully double closely spaced florets .....	.25	1.00	10.00
Lilac Spire .....	.25	1.00	10.00
<b>Los Angeles Improved</b>			
Brilliant pink on Salmon .....	.25	1.00	10.00
Miss California—Deep rose on salmon .....	.25	1.00	10.00
Pink Perfection—Beautiful shade of lively light salmon pink .....	.35	1.50	
Pink King—Soft shade of salmon rose .....	.25	1.00	10.00
Rosalind—Rose suffused salmon .....	.25	1.00	10.00
Sweet Lavender—Lavender color .....	.25	1.00	10.00
The Empress Improved—Salmon rose .....	.25	1.00	10.00
White King—Glistening white, huge flowers .....	.25	1.00	10.00
White Spire—Pure white, early .....	.25	1.00	10.00

## LARKSPUR TALL DOUBLE STOCK FLOWERED

	Tr. Pkt.	Oz.	Lb.		Tr. Pkt.	Oz.	Lb.
Dark Blue—Violet purple .....	\$.20	\$.50	\$6.00	Rosamond—Pure deep rose .....	\$.20	\$.50	\$6.00
Lilac Supreme—Purplish lilac .....	.20	.50	6.00	Rose Queen—			
Los Angeles—				Soft rose with salmon tinge .....	.20	.50	6.00
Brilliant pink on salmon .....	.20	.50	6.00	White .....	.20	.50	6.00

Larkspur seed may be sown directly in the open in the fall and will flower the following spring. There are two distinctly different methods used and each have a number of successful supporters. The first method is to sow the seed fairly early in the season about August 15th to September 15th. The small Larkspur seedlings will be sufficiently large enough when cold weather sets in to winter over when given a light mulch. The other method employed is to sow the seed in rows in late October or Early November so that it will not germinate until early next spring. This crop of Larkspur will generally come in shortly after Delphinium Belladonna.

# MARIGOLD

## GIGANTEA

A remarkable new sweet scented, robust growing extremely large flowered type, ideal for show purposes, florist use and garden decoration. It has also been tested and found good for greenhouse culture.

	Tr. Pkt.	Oz.
Orange Sunset—Deep, rich, lively orange .....	\$.35	\$1.75
Sunset Giants—A rich mixture of Deep Orange, Golden Orange, Light Yellow, Lemon Yellow .....	.35	1.75

## TALL DOUBLE AFRICAN VARIETIES

Of comparative recent development, these all double strains produce practically 100% true double flowers.

	Tr. Pkt.	Oz.
Orange All Double—Rich Orange .....	1/4 lb. \$5.00	\$.30 \$1.50
Lemon All Double—Bright Lemon Yellow .....	1/4 lb. 5.00	.30 1.50
Prince of Orange Improved .....	1/4 lb. 5.00	.30 1.50
Lemon Queen—Improved .....	1/4 lb. 5.00	.30 1.50
Golden Emblem—A distinct shade of deep golden yellow .....	.30	1.25

## MISSION GIANTS (Chrysanthemum Flowered)

	Tr. Pkt.	Oz.
Goldsmith—Rich golden orange .....	\$.40	\$2.75
Yellowstone—Clear golden yellow .....	.50	3.00



Marigold Carnation Flowered

## CARNATION FLOWERED

We are glad to be able to list additional colors of the ever popular SUPREME marigolds. One of the best of all marigolds for cutting. Odorless foliage.

	Tr. Pkt.	Oz.
Guinea Gold—Reselected Strain, Orange, loosely ruffled flowers. 2 - 2 1/2 feet .....	1/4 lb. \$5.00	\$.25 \$1.50
Orange Supreme—Deep orange .....	.30	1.50
Golden Supreme—Bright golden orange .....	.30	1.50
Yellow Supreme .....	1/4 lb. \$5.00	.25 1.25



# MARIGOLDS

## HARMONY TYPES

	Tr. Pkt.	Oz.
<b>Golden Harmony</b> — Luminous golden yellow .....	\$ .25	\$1.25
<b>Harmony</b> — Deep orange center petals flanked by wide dark maroon brown petals .....	.25	1.00
<b>Harmony Hybrids</b> —Dwarf attractive mixture of harmony type; crested flowers .....	.30	1.50
<b>Harmony Mixture Tall Double</b> —Tall growing form of Harmony Hybrids .....	.30	1.50
<b>Spotlight</b> —Yellow center; red guard petals .....	.30	1.50
<b>Sunkist</b> —(New)—Rich deep Golden Orange ..... 1/4 oz.,	\$ .75	.40 2.50



*Marigold Dwarf  
Harmony Type  
Butterball*

## DWARF FRENCH VARIETIES

	Tr. Pkt.	Oz.
<b>Fire Cross</b> —Single, saffron, orange with brown, red center .....	\$ .15	\$ .40
<b>Golden Ball</b> —Extra large double golden yellow flowers. Plants are dwarf and compact .....	.25	1.00
<b>Legion of Honor</b> —Single golden yellow with crimson spot .....	.15	.40
<b>Lemon Ball</b> —Double yellow flowers .....	.25	1.00
<b>Double Monarch Strain Mixed</b> —Compact type. A wide range of colors ..... 1/4 lb.,	\$2.00	.20 .75
<b>Dwarf Royal Scott All Double</b> —Rich mahogany and gold .....	.35	1.75
<b>Scarlet Glow</b> —Mahogany turning to orange scarlet .....	.35	1.75



*Marigold  
Dwarf Gigantea  
Pot O'Gold*

## DWARF GIGANTEA

	Tr. Pkt.	Oz.
<b>Pot O'Gold</b> —Deep golden orange, 100% all double .....	\$ .35	\$2.00
<b>Gypsy Jewels</b> — A mixture of various shades of yellow and orange. Plants dwarf compact and neatly formed .....	.35	1.75



*Marigold  
Tall African*



*Marigold Gigantea  
Full Double  
Orange*

## MINIATURE

	Tr. Pkt.	Oz.
<b>Butterball</b> —Dwarf. Soft Butter Yellow .....	\$ .35	\$1.75
<b>Melody</b> —Dwarf. Double, Brilliant Orange .....	.35	2.00
<b>Spry</b> —Yellow crested center, mahogany-red guard petals.....	.35	1.75
<b>Yellow Pigmy</b> —Very dwarf compact plants about 8 inches tall. Free flowering with lemon yellow blooms.....	.35	1.75

## TAGETES SIGNATA PUMILA (Mexican Marigold)

Small single flowered marigold with finely cut foliage. Very free flowering. Growing 6 to 10 inches in height it may be used in combinations as well as for bedding. Will stand adverse weather conditions well.

	Tr. Pkt.	Oz.
<b>Little Giant</b> —Deep orange, free flowering.....	\$ .25	\$1.25

## TALL FRENCH

	Tr. Pkt.	Oz.
<b>Josephine</b> —(Single)—Dark crown with edging of gold and a glint of crimson .....	\$ .15	\$ .50
<b>Liebs Winter Flowering</b> —Deep brown with yellow center.....	.35	1.75
<b>Liebs Winter Sunshine</b> —Golden Yellow, orange center.....	.50	



**MIGONETTE**

Valuable for cutting on account of its fragrance  
Seed sown in September will flower in late winter.  
January sowing will bloom in May.

**Giant New York Market** — Selected Tr. Pkt. Oz.  
Florist Strain ..... \$1.00 \$6.00

**NASTURTIIUM DOUBLE GLEAM**

<b>Golden Gleam</b> —Golden yellow, sweet scented, long stemmed.....	Oz.	¼ Lb.	Per Lb.
	\$ .15	\$ .35	\$ 1.00
<b>Moon Gleam</b> —Light golden cream	.15	.40	1.25
<b>Orange Gleam</b> —Deep glowing golden orange	.15	.40	1.25
<b>Salmon Gleam</b> —Delicate golden salmon	.15	.40	1.25
<b>Scarlet Gleam</b> —Scarlet, sweet scented	.15	.35	1.00
<b>Glorious Gleam Hybrids Finest Mixed</b> —Wide assortment colors, sweet scented	.15	.40	1.00

**NASTURTIIUM DWARF DOUBLE**

<b>Golden Globe</b> —Golden yellow, sweet scented	\$ .15	\$ .40	\$ 1.25
<b>Gem Mixture</b> —Dwarf compact gem-like plants, excellent color range, sweet scented	.15	.40	1.25

**NIEREMBERGIA—(Dwarf Cup Flower)**

Sow seed early to have plants in flower for Decoration Day. Excellent plant for edging and general bedding work. Will flower profusely during entire summer.

**Purple Robe** — Deep Violet Purple.

Tr. Pkt.	1/32 oz.
\$ .50	\$ 1.75

**NEMESIA NANA COMPACTA**

Dwarf habit. Branches freely from base. Excellent for pots and combination work. Tr. Pkt. ¼ oz.

<b>Aurora</b> —Carmine red with white lip.....	\$ .25	\$ .60
<b>Blue Gem Improved</b> —Myosotis blue, free flowering	.25	.60
<b>Fire King</b> —Brilliant scarlet-crimson, large flowers	.25	.60
<b>Orange Prince</b> —Rich orange large flowers	.25	.60
<b>Superbissima Mixed</b> —Large flowered bright shades	.25	.60

**NEMESIA STRUMOSA GRANDIFLORA**

Large flowered and long stemmed. August sowing grown in shallow soil will make excellent cut flowers in December and January. October sowing will produce a crop in the spring. May also be grown in large pots with a number of plants planted in each pot.

	Tr. Pkt. ¼ oz.		Tr. Pkt. ¼ oz.
<b>Blue</b>	\$ .25	\$ .60	<b>Rose</b> ..... \$ .25 \$ .60
<b>Cherry Red</b>	.25	.60	<b>Scarlet</b> ..... .25 .60
<b>Orange</b>	.25	.60	<b>White</b> ..... .25 .60
<b>Finest Mixed</b> —Very bright mixture.....	.25	.60	

**NICOTIANA AFFINIS (Ornamental Tobacco)**

Showy sweet scented annual plants, giving a continuous display of Summer flowers. Tr. Pkt. Oz.

<b>White</b> —Fragrant	.....	\$ .15	\$ .40
<b>Crimson Bedder</b> —Compact, Deep Crimson	.....	.25	1.75
<b>Rose and Pink Shades</b>	.....	.25	.75
<b>Suaveolens</b> —(Miniature White)—white; fragrant; 1½ ft.....	1/16 oz.,	\$ 1.00	.50

**PANSIES**

**Gloeckner's Superfine "Non Plus Ultra"**—This strain has large, fine flowers of superb texture and excellent markings. It is made up of fourteen separate colors so blended that it gives a perfect color balance to the mixture. It is without question a perfect strain for the commercial trade.....

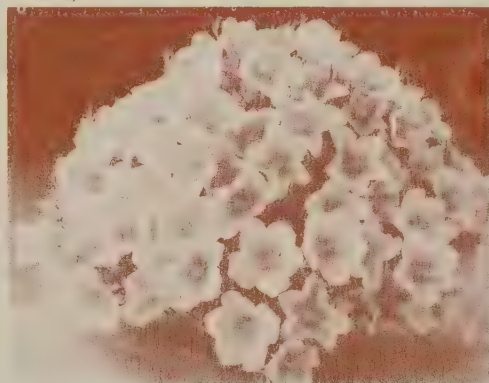
<b>Gloeckner's Exhibition Mixed</b> .....	.75	1.25	1.75	6.50
<b>Roggli Swiss Giant Imp. Mixed</b> .....	.75	1.25	2.25	8.00
<b>Coronation Gold</b> —Canary yellow; lower petals flushed golden orange, slightly spicy scented .....	.75	1.50	2.75	10.00

**SWISS GIANT SEPARATE COLORS**

<b>Roggli's Giant Alpenglöw</b> —Cardinal shades .....	\$ .75	\$ 1.25	\$ 2.25	\$ 8.00
<b>Roggli's Giant Berna</b> —Dark violet blue.....	.75	1.25	2.25	8.00
<b>Roggli's Giant Blue</b> —(Ullswater)—Rich clear blue.....	.75	1.25	2.25	8.00
<b>Roggli's Giant Luna</b> —Sulphur yellow self.....	.75	1.25	2.25	8.00
<b>Roggli's Giant Pure White</b> .....	.75	1.25	2.25	8.00
<b>Roggli's Giant Rheingold</b> —Yellow with blotch.....	.75	1.25	2.25	8.00



Nasturtium



Nierembergia



Pansy



Nicotiana Affinis

# PEPPERS

Florists have been looking for a greater variety of potted plants for fall and Christmas. The Ornamental Pepper which is easily grown from seed and gives satisfaction as a house plant should be a valuable addition to this class. The seed we offer is from careful single plant selections which possessed the following desirable characteristics:

Good habit of growth. Quantity and color of berries and plants that carried them well above the foliage.

We consider the varieties listed below the best in their type.

## CHRISTMAS CANDLE

A new type Christmas pepper bearing large quantities of medium candle-like fruit held erect on the plant.

Sow June 1st for finished plant in September.

Sow June 18th for finished plant in November.

Sow July 1st for finished plant at Christmas. PINCH TWICE.

## LONG POINTED

A fine selection of long pointed type Christmas pepper, Fruit somewhat smaller than Christmas Candle. This type carries large quantities of fruit, is a good grower and grows erect.

When the fruit ripens it turns from white to yellow and orange, then to a lively scarlet.

Sow July 1st for Christmas. PINCH ONCE.

## BIRDS EYE

This is the ever popular birds eye pepper or holly berry type. Makes a good dwarf plant literally covered with small round peppers about twice the size of a pea. The fruit is born on top of the foliage, making it an excellent type for Christmas use.

Sow July 1st for Christmas. PINCH ONCE.

## YELLOW KING

A long pointed golden yellow pepper. This variety is somewhat taller and just a trifle loose in its habit, however for make up work it is excellent, if you need a pepper of this color. Sow July 1st for Christmas. PINCH ONCE.

Trade Packet \$1.25

# SOLANUM PSEUDO CAPSICUM

## CLEVELAND CHERRY

An exceptional selection of Solanum. Fine dwarf habit of growth carrying large quantities of bright red fruit held well erect over the foliage.

Sow February 1st for Christmas.

Grow in the field and not in pots. Lift from the field and pot up about September 10th. Pinch only as needed to prevent uneven growth.

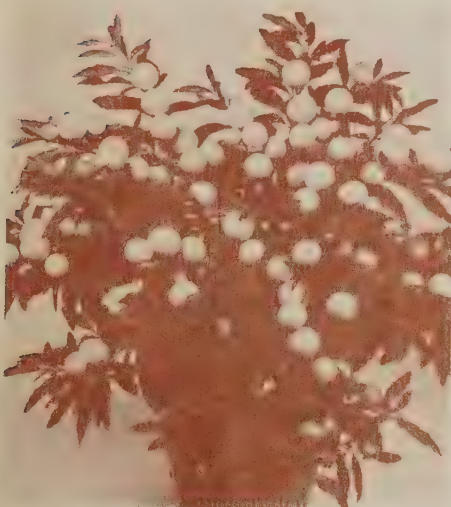
## YELLOW QUEEN

Identical to the red type Solanum except that the fruit is golden yellow.

Sow February 1st for Christmas.

Grow in the field and not in pots. Lift from the field and pot up about September 10th. Pinch only as needed to prevent uneven growth.

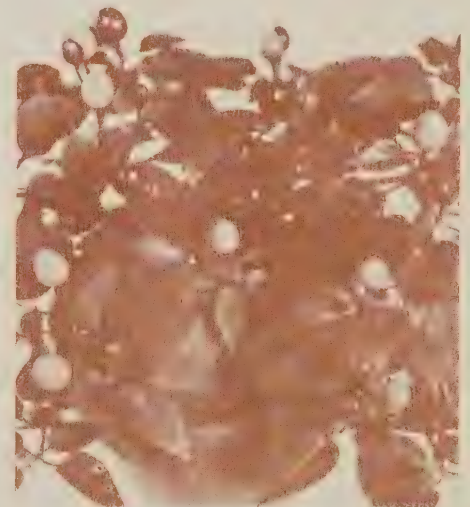
Trade Packet \$1.00



*Solanum*



*Pepper Christmas Candle*



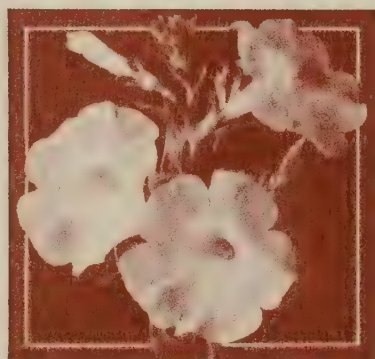
*Pepper Birds Eye*

**PLEASE NOTE:** The sowing dates as given are for the latitude and vicinity of New York City. If you are located farther north it would be well to sow a little earlier. If you are located to the south with more sunshine and a later Fall it is suggested that you sow a little later. Sowing dates must vary depending on your particular location.

**PEPPERS** are heavy feeders therefore do not allow the plants to become starved but keep them growing at all stages. They must be fed regularly, even when in fruit to maintain good color of foliage and berries.



# PETUNIAS



*Petunia Rosy Morn*

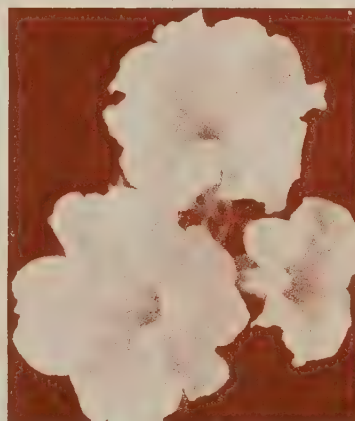
## HYBRIDA NANA ERECTA (Dwarf Hybrida Class)

	Tr. Pkt.	1/4 oz.	Oz.
<b>Blue Bedder</b> —Mid Blue .....	\$ .50	\$1.00	\$3.00
<b>Celestial Rose Improved</b> — Deep rose very compact .....	.50	1.50	4.00
<b>Commander</b> — White star on bright crimson .....	.50	2.75	
<b>Cream Star</b> —Creamy white .....	.50	1.75	6.50
<b>First Lady</b> —Soft light pink. 1/8 oz., 2.00; 1/16 oz., 1.25 .....	.50		
<b>Glow</b> —Dazzling carmine red .....	.50	5.00	
<b>Heavenly Blue Improved</b> — Light Blue .....	.40	1.75	6.50
<b>Howard Star Improved</b> — Velvety purple, pure white star .....	.35	1.50	5.00
<b>King Henry</b> — Rich velvety red. Dwarf and large flowered. 1/32 oz., 1.25; 1/16 oz., 2.25; 1/8 oz., 4.00 .....	.50		
<b>Radiance (Hybrida)</b> —Rich rose or cerise with golden throat .....	.50	2.00	7.00
<b>Ladybird</b> —Bright carmine overlaid with scarlet .....	1.00		
<b>Rose of Heaven</b> —Rose Pink .....	.35	.75	1.75
<b>Rose of Heaven Improved</b> — Very dwarf .....	.50	1.00	3.00
<b>Rose Queen Improved</b> — Intense brilliant rose .....	.50	3.00	
<b>Rosy Morn</b> —Rose, white throat .....	.35	.75	2.50
<b>Rosy Morn Improved</b> —Very dwarf .....	.50	1.00	3.00
<b>Salmon Supreme</b> — Light salmon white throat, 1/16 oz., 1.25; 1/8 oz., 2.50 .....	.50		
<b>Snowball</b> — Pure white, very compact .....	.25	.50	1.75
<b>Topaz Queen</b> —(Hybrida)— Extra dwarf. Scarlet Rose .....	.50	1.75	6.00
<b>Twinkles</b> — Brilliant rose starred white .....	.35	1.50	
<b>Velvet Ball</b> — Deep Velvety Blood Red. 1/32 oz., 1.50 .....	.75		
<b>Violet Blue</b> — Compact habit; rich violet blue .....	.50	1.50	4.75
<b>Violacea</b> —Deep velvety purple .....	.50	1.00	3.00
<b>Choiced Mixed</b> .....	.25	.50	1.75

## GRANDIFLORA SINGLE PLAIN EDGED

Tr. Pkt. 1/64 oz. 1/32 oz.

<b>Admiration</b> — Velvety blue spotted white .....	\$ .75	\$1.75	\$3.00
<b>Blue Beauty</b> — Distinct shade of violet blue .....	.50	1.25	2.25
<b>Elks Pride Improved</b> — Best large dark velvety purple.....	.75	1.25	2.00
<b>Dwarf Elks Pride</b> — Same color as above but much more dwarf .....	1.00	1.50	2.00
<b>Pink Glory Improved</b> — Flame Rose Pink, very compact .....	.75	1.75	3.00
<b>Silver Seam</b> —Dark blue with edge of petals clearly seamed white .....	.75	1.50	2.50
<b>Snowstorm Improved</b> — Glistening white, shaded yellow in throat.....	.75	1.75	3.00
<b>Velvet Flame</b> —Crimson .....	.75	1.50	2.50
<b>White Cloud</b> — Pure white, dwarf, compact .....	.75	1.50	2.50



*Petunia Grandiflora Plain Edged White Cloud*



*Petunia Grandiflora Single Fringed Theod*

## BALCONY PETUNIAS

	Tr. Pkt.	1/4 oz.	Oz.
<b>Black Prince</b> — Deep rich velvety crimson .....	\$ .50	\$2.00	\$7.00
<b>Blue</b> —Rich Indigo .....	.35	1.25	4.00
<b>Crimson</b> —Velvety .....	.35	1.00	3.00
<b>Rose</b> —Brilliant .....	.35	1.25	4.00
<b>Balcony Rosy Morn</b> — Pink with white throat .....	.50	2.00	
<b>White</b> —Pure White .....	.35	1.25	4.00
<b>Mixed Colors</b> .....	.35	1.25	4.00

## PETUNIA RUFFLED NANA COMPACTA

Tr. Pkt. 1/64 oz. 1/32 oz.

<b>Ruffled Grandiflora Nana Com- pacta Mixed</b> — See page 3 for complete description .....	.75	1.25	2.25
---	-----	------	------

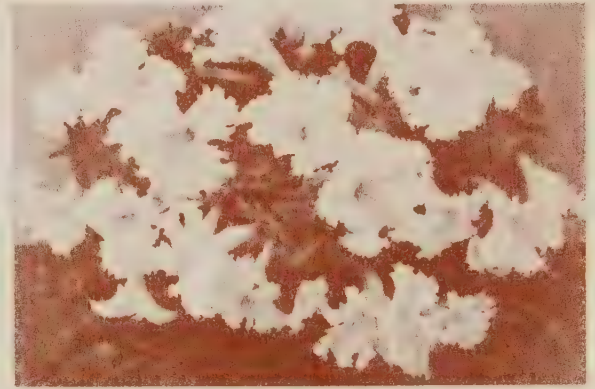


# PETUNIAS

## GRANDIFLORA COMPACTA SINGLE FRINGED OR DWARF ERFURT

For fringed flower and compact growth this class is considered extremely valuable.

	Tr. Pkt. 1/64 oz. 1/32 oz.		
<b>Gaiety</b> —Rose and white, daintily fringed, free flowering .....	\$1.00		
<b>Gottfried Michaelis</b> —			
Velvety magenta crimson, dark throats .....	.50	\$1.50	\$2.50
<b>Lace Veil</b> —			
Pure white, large flowers, free flowering.....	1.00	2.00	3.50
<b>Setting Sun</b> —Brilliant deep rose, dark throats	1.00	2.00	3.50
<b>Finest Mixed</b> .....	1.00	2.00	3.50



*Petunia Lace Veil*

## GRANDIFLORA SINGLE LARGE FLOWERING FRINGED

	Tr. Pkt. 1/64 oz. 1/32 oz.					
<b>Dainty Lady</b> —Very Pale Yellow.....	\$1.00			<b>Romany Lass</b> —		
<b>Golden Jubilee</b> —				Deep crimson, deeper throat.....	\$ .75	\$1.50
Rose Carmine; golden throat.....	1.00			<b>Royal Purple</b> —(Marine) .....	.75	1.50
<b>Miranda</b> —				<b>Steel Blue</b> —(Fimbriata Coerulea)		
Rose carmine, dark throats .....	.75	1.50		medium blue .....	.75	1.50
<b>Pink Triumph</b> —Bright rose pink.....	.75	1.50		<b>Theodosia Improved</b> —		
<b>Pride of Portland</b> —Deep Pink .....	.75	1.50		Largest fringed rose, gold throat	.75	1.75 \$3.00
<b>Rapture</b> —				<b>White Beauty</b> .....	.75	1.25
Orchid Rose with golden throat	.75	1.50	2.50	<b>Fluffy Ruffles Mixed</b> .....	.50	1.25



*Petunia Giants of California Supreme Strain*



*Petunia Dainty Lady*

## CALIFORNIA RUFFLED GIANTS (Large Throated)

	Tr. Pkt.	1/64 oz.	1/32 oz.
<b>Coppery Red</b> — Coppery scarlet, dark throat .....	\$ .75	\$1.50	\$2.50
<b>German Empress</b> — Lilac veined, purple throat ...	.75	1.50	2.50
<b>Glamour</b> —(New)—			
Salmon rose, delicately veined brown in the creamy throat. An All America selection .....	.75	1.75	3.00
<b>Prince of Wuerttemberg</b> —(Black Prince)—Dark crimson, black throat..	.75	1.50	2.50
<b>Princess of Wuerttemberg</b> —Rose, deep garnet throat .....	.75	1.50	2.50
<b>Rheingold</b> —Large white, bright yellow throat ...	.75	1.50	2.50
<b>Robin Hood</b> —Dark crimson, dark throat .....	.75	1.50	2.50
<b>Silver Rose</b> —Silvery rose, large veined throat .....	.75	1.50	2.50
<b>Supreme Strain</b> — Large ruffled flowers in Rose and Pink shades .....	.75	1.50	2.75
<b>Mixed</b> .....	.75	1.50	2.50

### DWARF GIANTS OF CALIFORNIA

**Ramona Strain**—A dwarf sturdy growing type especially suited to pot culture. Flowers are beautifully ruffled and fringed with open well marked throats.

Tr. Pkt.	1/64 oz.	1/32 oz.	1/16 oz.	1/8 oz.
\$1.00	\$1.75	\$3.00	\$5.00	\$9.00

**Dwarf Continental Giants**—A selected dwarf strain in an exceptionally fine mixture.

Trade Packet \$1.50



**PRIMULA MALACOIDES "SPRINGTIME"**

ANOTHER *Gloeckner* INTRODUCTION



*Primula Malacoides Springtime*

**Springtime** is one of the finest Malacoides ever offered. The color is an attractive **salmon pink** which does not fade with age. The flower stems are strong and support a profusion of good sized blooms; and unlike many other varieties of Malacoides, the foliage has good texture and is fairly resistant to rot. Thus the outstanding features of this variety are its pleasing salmon pink color, compact habit of growth and excellent keeping quality.

Seed sown in June will make good flowering plants for January. September sown seed will produce good plants for early Spring; while later sowings can be grown into small plants usable in combinations.

**TRADE PACKET \$2.00**

**PRIMULA GIANT MALACOIDES**

	Tr. Pkt.
Fairy Jewels—(Double)—Rose pink .....	\$1.50
Enchantress—Soft Salmon .....	1.50
Snowflake—Pure white .....	1.00
Giant Malacoides Mixed .....	1.00

**PRIMULA MALACOIDES ERIKSSONI**

	Tr. Pkt.
New Baby—Glowing deep pink .....	\$1.00
Glory of Riverside—Rose pink .....	1.00
New Giant—Pink .....	1.00
Wonder Baby—Pink .....	1.00

**PRIMULA OBCONICA**

	Tr. Pkt.	1/64 oz.	1/32 oz.
Mueller Rose .....	\$1.50	\$2.50	\$4.00
Mohnstein Red .....	1.50	2.50	4.00
Fasbender—Red .....	1.50	2.50	4.00
White .....	1.50	2.50	4.00



*Papaver Nudicaule*

**PHLOX DRUMMONDI (Dwarf)**

	Tr. Pkt.	1/4 oz.	Oz.
Cecily Mixed—An extra fine re-selected strain. Excellent color range .....	\$ .50	\$1.25	\$4.00

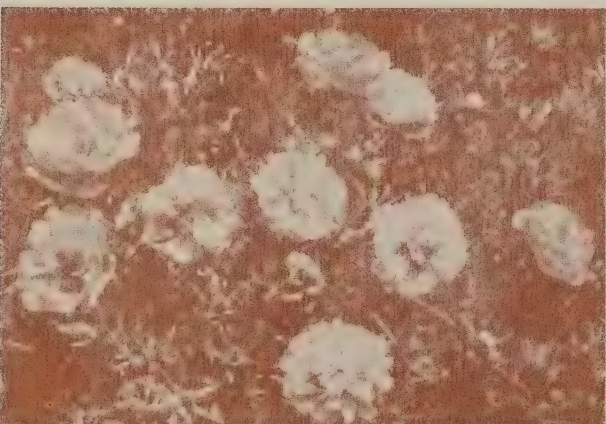
**PHLOX GRANDIFLORA (Tall Growing)**

	Tr. Pkt.	1/4 oz.	Oz.
Alba—Pure White .....	\$ .35	\$ .75	\$2.75
Brilliant—Clear Rose, Dark Eye .....	.35	.75	2.75
Chamois Rose—Carmine Eye .....	.35	.75	2.75
Coccinea—Scarlet .....	.35	.75	2.75
Lilac .....	.35	.75	2.75
Isabelliana—Primrose Yellow .....	.35	.75	2.75
Rosy Morn—Deep Rose Pink with white eye .....	.40	.85	3.00
Art Shades Mixed .....	.40	.75	2.75

**POPPY NUDICAULE (Iceland Poppy)**

**GIANT FLOWERING STRAINS**

	Tr. Pkt.	Oz.
The Emperor—Extremely large flowered, orange .....	\$ .40	\$4.50
The Empress—Very large flowered, delightful salmon Rose shades .....	.40	4.50
Amurense Yellow—Fine large flowered, yellow .....	.40	4.50
El Monte—Deep tangerine, orange .....	.25	2.50
Fakenham Hybrids—Fine strain .....	.25	2.50
Gartref Strain—Pastel colors, picotee markings .....	.35	4.00
Sanford's Giants—Finest Mixed, vigorous growers, long stems, fine colors .....	.30	3.00



*Portulaca Grandiflora Double*

**PORTULACA**

	Tr. Pkt.	Oz.
Double—Larger flowering Mixed. Extra fine quality .....	\$ .25	\$2.25
Single—Large flowering Mixed .....	.15	.50



**QUEEN ANNE'S LACE FLOWER**

Tr. Pkt. Oz.  
 Flowers are white, similar to wild carrot. Good filler for retail work, may be dyed.....\$ .15 \$ .75

**RUDBECKIA**

Tr. Pkt. 1/4 oz. Oz.  
**Hirta Autumn Tints** — Bronzy Autumn shades; petals stand out; do not drop; 4 inch flowers .....\$ .35 \$2.00  
**Kelvedon Star** — Long stemmed cutting strain. Yellow, Orange and mahogany shades with dark centers .....\$ .25 \$ .50 \$1.75

**RICINUS (Castor Beans)**

**Zansibariensis Mixed** — Very richly colored foliage. Enormous plant, on good soil growing 10' high.  
 Oz., 20c Per lb., \$2.25

**SALPIGLOSSIS EMPEROR or SUPERBISSIMA (Painted Tongue)**

	Tr. Pkt.	Oz.
Brown and Gold .....	\$ .25	\$1.25
Crimson .....	.25	1.25
Crimson and Gold.....	.25	1.25
Faust—Black .....	.25	1.25
Light Blue and Gold.....	.25	1.25
Purple .....	.25	1.25
Purple and Gold .....	.25	1.25
Rose and Gold .....	.25	1.25
Rose Crimson and Gold.....	.50	2.50
Scarlet and Gold .....	.25	1.25
Velvety Red .....	.25	1.25
Violet .....	.25	1.25
Violet and Gold.....	.25	1.25
White and Gold.....	.25	1.25
Yellow—Golden Yellow .....	.25	1.25
Finest Mixed .....	.20	1.00



Salvia

**SALVIA**

	Tr. Pkt.	1/4 oz.	Oz.
<b>America</b> —Globe of Fire.....	\$ .50	\$1.50	\$5.00
<b>Bonfire</b> —(Clara Bedman) .....	.50	1.50	5.00
<b>Fire Magic</b> —Earliest and dwarfest Salvia; very fine .....	.65	2.00	7.00
<b>Harbinger</b> — Early flowering dwarf, bright scarlet.....	.50	1.50	5.00
<b>Splendens</b> —Tall growing .....	.50	1.00	3.00
<b>Firebrand</b> — Extra early, very dwarf scarlet .....	.50	1.25	4.75
<b>Zurich</b> —Dwarf very early scarlet .....	.50	1.25	4.75

**MISCELLANEOUS**

<b>Farinacea Blue Bedder</b> — Deep blue .....	.50	1.00	3.00
<b>Farinacea Royal Blue</b> —More intense color than Blue Bedder..	1.00	3.00	10.00

**SAPONARIA VACCARIA**

January 15th sowing in shallow flats will flower for Mothers' day.

	Tr. Pkt.	Oz.
<b>Rosea</b> (Gloeckner Strain) — Used in same manner as "Baby's" breath; feathery pink flowers .....	\$ .25	\$1.00

**SCABIOSA**

**LARGE FLOWERED TALL DOUBLE (Old Maid's Pincushion)**

This long stemmed, free flowering annual is gaining great popularity as a summer cut flower. Every retail grower should have a good supply all summer. This flower is easily grown when seeded in April and transplanted out of doors.



Scabiosa Imperial Giants Blue Moon

	Tr. Pkt.	Oz.
<b>Ageratum Blue</b> —Mid blue .....	\$ .15	\$ .50
<b>Azure Fairy</b> —Azure blue .....	.15	.50
<b>Blue Cockade</b> —Deep blue .....	.15	.50
<b>Cattleya</b> —Rich rosy lilac, orchid tone .....	.15	.50
<b>Coral Pink</b> —Rich pink .....	.15	.50
<b>Cherry Red or Crimson</b> .....	.15	.50
<b>Fire King</b> —Fiery scarlet .....	.15	.50
<b>King of the Blacks</b> —Reddish black.....	.15	.50
<b>Loveliness</b> —Salmon rose shades .....	.15	.50
<b>Peach Blossom</b> .....	.15	.50
<b>Rosette</b> .....	.30	1.50
<b>Rose</b> .....	.15	.50
<b>Shasta</b> —Pure white, very large.....	.15	.50
<b>Special Mixture</b> .....	.15	.50

**SCABIOSA IMPERIAL GIANTS**

**Blue Moon** — Flowers composed entirely of broad heavy wavy petals.

	Tr. Pkt.	Oz.
Rich Deep Lavender Blue.....	\$ .40	\$2.50



# STOCKS



Stocks are very satisfactory for Winter and Spring flowering. Sowing the seed in August and benching in October, the first flowers may be cut before Christmas if additional light (40-60 watt lamps spaced 5 feet) is used. Without this aid the crop will come into flower in January. Continuity of bloom may be obtained by successive sowings. The non-branching type, which has come into general use, should be planted 3 inches in the row and 6 inches between rows, producing a single stem. The branching types should be planted 8 x 8 inches and topped when 6 inches tall to produce side shoots of sufficient length.

Flowering of stocks only occurs when the temperatures are below 60 degrees for the greater part of the night. To secure the greatest percentage of doubling the largest and most vigorous plants should be selected.

### NON-BRANCHING (Excelsior Column Stocks)

	Tr. Pkt.	1/4 oz.	Oz.
<b>Dark Blue</b> .....	<b>\$1.00</b>	<b>\$2.50</b>	<b>\$9.00</b>
<b>Gardenia</b> —Shimmering glistening white .....	1.25	3.50	12.00
<b>Malmaison Pink</b> —Blush pink .....	1.00	2.50	9.00
<b>Rose Pink</b> —Clear rose pink .....	1.00	2.50	9.00
<b>Ruby</b> —Rich crimson red .....	1.00	2.50	9.00
<b>Silvery Lilac</b> —Lavender .....	1.00	2.50	9.00
<b>White</b> .....	1.00	2.50	9.00
<b>Yellow Wonder</b> —Rich creamy yellow with full double florets well arranged on long spikes .....	1.00	3.50	12.00

### GIANTS OF CALIFORNIA (Branching)

The Giants of California can also be grown similarly to the non-branching type. When grown this way the side shoots should be removed. For the retail grower the branching types are gaining in popularity. These should be planted 8 x 8 inches and topped when 6 inches tall to produce side shoots of sufficient length.

	Tr. Pkt.	1/4 oz.	Oz.
<b>Pacific</b> —Blue .....	<b>\$.35</b>	<b>\$1.00</b>	<b>\$3.50</b>
<b>Red Woods</b> —Blood red .....	.35	1.00	3.50
<b>Rose Light</b> —Bright Rose .....	.35	1.00	3.50
<b>Tahoe</b> —Lavender .....	.35	1.00	3.50
<b>Santa Maria</b> —White .....	.35	1.00	3.50
<b>Santa Barbara</b> —Chamois .....	.35	1.00	3.50

### Sowing Dates of Column or Non-Branching Stock for Various Blooming Dates

Time of sowing	Flowering
August 1 .....	January
September 1 .....	February
October 1 .....	March
November 1 .....	April
December 1 .....	May
January 1 .....	Mother's Day
February 1 .....	June
February 15 .....	June 15

**STOCKS - Continued**

**BISMARCK OR BRANCHING STOCKS**

Early Giant Imperial

This class continues to be popular with the florist for a cut flower. It is also excellent for bedding.

	Tr. Pkt.	1/4 oz.	Oz.
<b>Buttercup</b> —Rich Yellow.....	\$ .35	\$1.00	\$3.00
<b>Chamois</b> —Ivory, tinted Old Rose.....	.35	1.00	3.00
<b>Dark Blue or Purple</b> .....	.35	1.00	3.00
<b>Elk's Pride</b> —Rich deep purple.....	.35	1.00	3.00
<b>Fiery Blood Red</b> .....	.35	1.00	3.00
<b>Flesh</b> —Bright Flesh.....	.35	1.00	3.00
<b>Golden Rose</b> —Light golden Rose.....	.35	1.00	3.00
<b>Lavender</b> —Silvery Lilac.....	.35	1.00	3.00
<b>White</b> .....	.35	1.00	3.00

**DWARF TEN-WEEK (Large Flowering)**

For Pot Plants and Bedding

	Tr. Pkt.	1/4 oz.	Oz.
<b>Blood Red</b> .....	\$ .35	\$ .75	\$2.25
<b>Lavender</b> .....	.35	.75	2.25
<b>Canary Yellow</b> .....	.35	.75	2.25
<b>Carmine Pink</b> .....	.35	.75	2.25
<b>Purple</b> .....	.35	.75	2.25
<b>White</b> .....	.35	.75	2.25
<b>Deep Rose</b> .....	.35	.75	2.25
<b>Mixed</b> —All colors .....	.35	.75	2.25



*Plant of Stock Dwarf Ten Week*





# SWEET PEAS

## EARLY OR WINTER FLOWERING

### PINK

	Oz.	¼ lb.	Lb.
<b>Annie Laurie</b> —Pure rose pink .....	\$ .35	\$1.00	\$3.50
<b>Ball Rose Improved</b> —Cerise pink.....	.45	1.40	4.00
<b>Boon</b> —Deep coral pink .....	.35	1.35	4.50
<b>Daphne</b> —Soft salmon pink .....	.35	1.00	3.50
<b>Jeanne Mamitsch</b> —Rich pink .....	.35	1.40	3.50
<b>Josie</b> —			
Brilliant rose pink, long stems .....	.35	1.25	4.00
<b>Laddie Improved</b> — Long stemmed			
giant rose, pink .....	.35	1.00	3.50
<b>Majestic Rose</b> —Deep brilliant rose			
pink .....	.35	1.00	3.50
<b>Rose Queen Improved</b> —Rose pink .....	.35	1.00	3.50
<b>Shirley Temple</b> —			
Delightful soft rose pink .....	.40	1.40	5.00
<b>Zvolaneck's Rose</b> .....	.35	1.00	3.50

### BLUE

<b>Blue Bonnet</b> —Best clear blue .....	.35	1.00	3.50
<b>Early Magic</b> —Delicate Mauve .....	1.50	5.50	
<b>Mrs. Herbert Hoover</b> —Clear blue..	.35	1.00	3.50
<b>Princess Blue</b> —			
Rich belladonna blue .....	.50	1.75	5.50

### WHITE

<b>Hope</b> —(Black Seeded), Pure white .....	.35	1.25	4.00
<b>Snowstorm</b> —White .....	.35	1.00	3.50
<b>White Harmony</b> —(Black Seeded)...	.35	1.00	3.50

### RED

	Oz.	¼ lb.	Lb.
<b>Grenadier</b> —Dazzling scarlet .....	\$ .35	\$1.00	\$3.50
<b>Pride</b> —Pure deep even cerise .....	.35	1.00	3.50
<b>Signal Red</b> —A real sunproof scar-			
let of great brilliance .....	.65	1.75	6.00

### ORANGE

	Oz.	¼ lb.	Lb.
<b>Ball Orange Improved</b> —			
Clear deep orange .....	.35	1.25	4.00
<b>Sequoia</b> — Golden salmon cerise,			
large flowers .....	.35	1.25	4.00
<b>Treasure Island</b> —Sparkling shades			
of golden orange .....	.50	1.50	5.00
<b>Valencia</b> —Sunproof orange .....	.40	1.40	5.00

### LAVENDER

	Oz.	¼ lb.	Lb.
<b>Fragrance</b> —Clear lavender .....	.35	1.00	3.50
<b>Harmony</b> —Clear lavender .....	.35	1.00	3.50
<b>Lavanda</b> —Clear lavender .....	.35	1.25	4.00
<b>Triumph</b> —			
Lilac mauve, long stemmed .....	.35	1.35	4.50
<b>Twilight</b> — Lavender, with larger			
flowers than Harmony, which is			
nearest this in color; vigorous			
grower .....	.65	1.75	6.00



*Sweet Pea Early Magic*

### Sowing and Flowering Dates for EARLY OR WINTER FLOWERING SWEET PEAS

Date to sow seed

\*July \_\_\_\_\_  
 August \_\_\_\_\_  
 September \_\_\_\_\_  
 November \_\_\_\_\_  
 December \_\_\_\_\_

Time of flowering

October—January  
 December—February  
 February—April  
 March—May  
 April—June

\*Only recommended in Northern States.

# SWEET PEAS

## SPRING FLOWERING

This new class of Sweet pea is a worthwhile addition. November 1st sowing will start flowering in early April and will continue to bloom on longer stems than early flowered varieties sown the same date. **This new class is only recommended for sowings after November 1st;** also used for out of doors sowing.

### STANDARD VARIETIES

	1/2 oz.	1 oz.	1/4 lb.	Lb.
<b>Clear Pink</b> —Soft, clear pink .....	\$.35	\$.50	\$1.50	\$5.00
<b>Blue</b> —Marine blue .....	.35	.50	1.50	5.00
<b>Lavender</b> —Light even shade .....	.35	.50	1.50	5.00
<b>Mauve</b> —Rich, glistening mauve .....	.35	.50	1.50	5.00
<b>Rose Pink</b> —Clear rose pink .....	.35	.50	1.50	5.00

### NOVELTIES

	1/2 oz.	Oz.	1/4 lb.
<b>Black-Seeded White</b> —Pure white .....	\$.60	\$1.00	\$3.75
<b>Light Blue</b> —Clear light blue .....	.60	1.00	3.75
<b>Light Cream Pink</b> —Apple blossom pink .....	.60	1.00	3.75
<b>Navy Blue</b> —Deep violet blue .....	.60	1.00	3.75



*Sweet Pea Spring Flowering  
Black Seeded White*

## Late or Summer Flowering WHITE

	Oz.	1/4 lb.	Lb.
* <b>Gigantic</b> —White-black seeded .....	\$.20	\$.60	\$1.75
<b>Snow White</b> .....	.20	.60	1.75

### PINK

* <b>Pinkie</b> —Large rose pink .....	.20	.60	1.75
* <b>Crony</b> —Shrimp pink .....	.20	.60	1.75
<b>Floradale</b> —Rich salmon pink on cream ground .....	.20	.60	1.75
<b>Pink Frills</b> —Rich cream pink .....	.20	.60	1.75

### LAVENDER

* <b>King Lavender</b> —Clear lavender .....	.20	.60	1.75
<b>Highlander</b> —Pure Lavender .....	.20	.60	1.75

### BLUE

* <b>Windsor Blue</b> —Clear mid-blue; large flowered; heavy stems .....	.20	.60	1.75
<b>Flagship</b> —Deep navy blue .....	.20	.60	1.75

### RED

* <b>Welcome</b> —Dazzling scarlet .....	.20	.60	1.75
<b>Rubicund</b> —Crimson scarlet .....	.20	.60	1.75

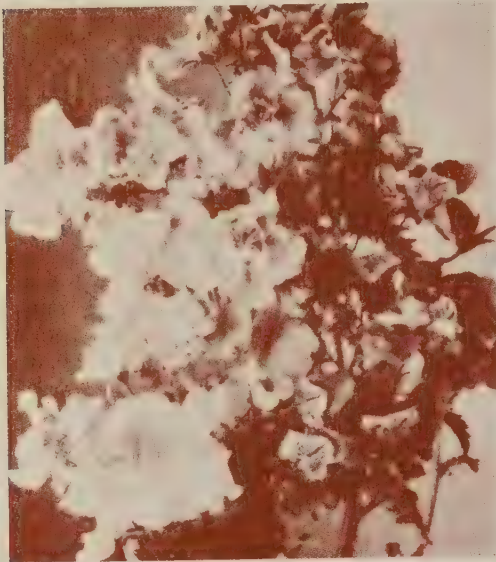
### ORANGE

* <b>Orange Flare</b> .....	.20	.60	1.75
<b>Tangerine Improved</b> —Fiery orange .....	.20	.60	1.75

\* — Seven Best



*Sweet Pea Spring Flowering  
Clear Pink*



Schizanthus



Statice Sinuata



Torenia Fournieri Grandiflora

**SCHIZANTHUS**

Late summer sowing planted after early Chrysanthemums should flower in March. If additional light is used from October 25, blooming will start in January.

Tr. Pkt. ¼ oz. Oz.

<b>Blackmore and Langdon Blotched Strain</b> —Dark and light shades, each flower with contrasting dark extra large blotch, large flowers, free flowering, 18 inches	\$ .50	\$ 1.50	\$ 5.00
<b>Excelsior Compactus Finest Mixed</b> — Popular shades, compact, 6" pyramidal, very free flowering, excellent for pot plant use	.50	1.50	5.00
<b>Brilliant Blend</b> —Dark bright colors, suitable for cutting. If properly pinched will make a good pot plant	.50	1.25	4.00
<b>Bridal Veil</b> —Pure White	.50	1.25	4.00

**SMILAX**

Tr. Pkt. Oz.

A well known green house climber ¼ lb., \$1.50	\$ .20	\$ .50
--	--------	--------

**STATICE SINUATA**

Tr. Pkt. Oz.

<b>Kampf's Tall Improved</b> —Deepest blue	\$ .20	\$ .60
<b>Lavender</b>	.15	.30
<b>Rosea Superba</b>	.15	.30
<b>Snow White</b> —Greatly Improved White	.15	.30
<b>Market Growers Blue</b> —Deep blue	.15	.30
<b>Yellow</b> —(Bonduelli)	.15	.30
<b>Choice Mixed</b>	.15	.30

**STATICE SUWOROWI**

Russian or Rat Tail Statice

Tr. Pkt. Oz.

A very ornamental variety with long graceful spikes of rose pink flowers. Seed sown early outdoors will bloom in July. For the greenhouse seed started in October and spread on light shallow soil will flower from February to May. 45 degrees is best temperature

	\$ .25	\$ .75
--	--------	--------

**THUNBERGIA—Black Eye Susan**

Tr. Pkt. Oz.

Mixed	\$ .15	\$ .50
-------	--------	--------

**TITHONIA—Mexican Sunflower (Early Flowering Strain)**

Tr. Pkt. ¼ oz.

**Speciosa** — Bright orange vermilion resembling large single African Marigolds. A good cut flower. Start early to get outdoor bloom by mid-summer... \$ .25 \$ .75

**TORENIA**

Good spring and summer pot plant. Sow seed in February and grow in a warm temperature. Ideal for bedding work, will do well in full sun or partial shade.

Tr. Pkt.

<b>Fournieri Grandiflora</b> — Blue	\$ .50
-------------------------------------	--------

## VERBENA

### Giant Flowering Hybrida Grandiflora Gigantea

A popular bedding plant due to its free flowering qualities. Seed must be sown early to get good plants for Spring.



Verbenas

	Tr. Pkt.	1/4 oz.	Oz.
<b>Beauty of Oxford Hybrids</b> —Rose Pink to Rose Red shades .....	\$ .50	\$ .75	\$3.00
<b>Brightness</b> —Bright Rosy Cerise Scarlet; white eye .....	.50	.75	3.00
<b>Cerise Queen</b> —Salmon Cerise.....	.50	.75	3.00
<b>Crimson Glow</b> —Glowing Crimson .....	.50	.75	3.00
<b>Etna</b> —Geranium Red with light Yellow eye .....	.50	.75	2.50
<b>Giant Salmon Pink</b> —Salmon Pink with White eye .....	.25	.50	1.50
<b>Lavender Glory</b> —Large flowered Lavender with light eye .....	.50	.75	2.50
<b>Luminosa</b> —Fiery Pink shading to Salmon .....	.25	.50	1.50
<b>Royale</b> —Blue with Creamy Yellow eye .....	.50	.75	2.50
<b>Spectrum Red</b> —Intense bright Red .....	.50	.75	2.50
<b>White</b> —Pure White .....	.25	.50	1.50

### HYBRIDA MAMMOTH

	Tr. Pkt.	Oz.
<b>Dannebrog</b> —Intense scarlet with large white eye. Very compact growth which makes it useful for bedding. The rich sparkling color of this showy verbena comes true to type .....	\$ .25	\$2.00
<b>Ellen Willmott</b> —Extra large salmon rose flower with white eye .....	.25	2.00
<b>Mayflower</b> —Medium Light Pink .....	.25	2.00
<b>Golden Queen</b> —Best yellow .....	.25	2.00

### HYBRIDA DWARF COMPACT — Erect Growing

A distinct new type, very compact, dwarf, and covered with flowers.

	Tr. Pkt.	Oz.
<b>Blue Sentinel</b> —Violet blue white eye.....1/4 oz., \$ .75	\$ .50	\$3.00
<b>Brilliant</b> —Scarlet, white eye.....	.35	2.50
<b>Cameo Pink</b> —Exceptionally dwarf.....	.35	2.50
<b>Carmine Ball</b> —Bright Carmine.....	.35	2.50
<b>Dark Blue</b> —Marine Blue.....	.35	2.50
<b>Fire Ball</b> —Bright Scarlet. Very dwarf compact.....	.35	2.50
<b>Red Sentinel (New)</b> —Intense bright red, with no eye.....	.50	4.00
<b>Snowball</b> —Pure White.....	.35	2.50
<b>Violet Bouquet</b> —Very dwarf compact.....	.50	3.00

### VERBENA ROYAL BOUQUET

	Tr. Pkt.	Oz.
<b>Mixed</b> —Large flowers in brilliant mixture.....1/4 oz., \$ .75	\$ .50	\$3.00

### VARIOUS VERBENAS

	Tr. Pkt.	Oz.
<b>Venosa</b> —Bright Rosy Lilac or Heliotrope flowers, freely born on short spikes. A fine bedding or border plant, showy all summer	\$ .50	\$1.50
<b>Venosa Lilacina</b> —Delicate lavender blue .....	.50	2.00

### VINCA (Periwinkle)

An Excellent Bedding Plant. Sow seed in August or September.

	Tr. Pkt.	Oz.
<b>Alba Pura</b> —Pure White.....	\$ .30	\$1.60
<b>White with Eye</b> .....	.30	1.60
<b>Rosea</b> —Pink .....	.30	1.60



Vinca



# ZINNIAS

## GIANT CALIFORNIA OR MAMMOTH FLOWERED

This type has rapidly gained in popularity. The plants which are three to four feet in height, are taller than the Dahlia Flowered class and has long stems, which adapt it particularly for use as a cut flower. The large flat flowers with imbricated petals give a graceful effect.

**Brightness**—Bright pink

**Cherry Queen**—

Brilliant cherry rose

**Daffodil Improved**—Canary yellow

**Enchantress**—

Light rose, deep rose center

**Golden Queen**—Golden yellow

**Grenadier**—Bright, dark red

**Lavender Queen**—

Deep rosy lavender

**Miss Willmott**—Soft pink

**Orange King**—

Cadmium or orange scarlet

**Orange Queen**—Golden orange

**Purity**—

White, best white in Zinnias

**Rose Queen**—Striking bright rose

**Salmon Queen**—Salmon rose

**Scarlet Queen**—

Glowing deep scarlet

**Violet Queen**—Deep purple

**Finest Mixed**—

From named varieties

Tr. Pkt.	¼ oz.	½ oz.	1 oz.	¼ lb.	Lb.
\$ .25	\$ .40	\$ .60	\$1.00	\$3.50	\$12.00



*Zinnia Dahlia Flowered*

## SUPER CROWN O'GOLD

Each petal of the flower is overlaid with a deep golden yellow at the base, while carrying out the individual flower color at the tip.

	Tr. Pkt.	¼ oz.	½ Oz.
<b>Desert Gold</b> .....	\$ .25	\$ .35	\$1.00
<b>Pastel Tints</b> — Contains a wide range of pastel shades.....	.40	.60	2.00

## FANTASY

	Tr. Pkt.	¼ oz.	Oz:
<b>Melody</b> —(New)—Orchid lavender .....	\$ .30	\$ .40	\$1.25
<b>Orange Lady</b> —Rich shade of deep bright orange .....	\$ .30	\$ .40	\$1.25
<b>Rosalie</b> —Bright intense rose .....	.30	.40	1.25
<b>Star Dust</b> —Golden yellow .....	.30	.40	1.25
<b>White Light</b> —White .....	.30	.40	1.25
<b>Wildfire</b> —Rich dazzling scarlet.....	.30	.40	1.25
<b>Finest Mixed</b> — A bright colorful mixture of shaggy petaled medium sized double flowers, excellent for cutting .....	.25	.35	1.00



*Zinnia California Giant*

## DAHLIA—FLOWERED

### Bodger's Gold Medal Strain

These are characterized by the tendency of the center petals to incurve thus giving a deep, full appearance.

**Canary Bird**—Rich canary yellow

**Crimson Monarch**—Deep crimson, flowers very large

**Dream**—Deep lavender

**Exquisite**—Light rose, deep rose center

**Golden Dawn**—Golden yellow

**Illumination**—Deep rose self

**Luminosa**—Bright deep pink

**Meteor**—Rich deep red, darkest of all reds

**Old Gold**—Deep and lighter shades of old gold

**Oriole**—Orange and gold bicolor, turning deep orange

**Polar Bear**—Large pure white

**Scarlet Flame**—Bright scarlet

**Will Rogers**—Brilliant scarlet red

**Gold Medal Finest Mixed**

Tr. Pkt.	¼ oz.	½ oz.	1 oz.	¼ lb.	Lb.
\$ .25	\$ .40	\$ .60	\$1.00	\$3.50	\$12.00



*Zinnia Fantasy*





# ZINNIAS

## DWARF, SMALL FLOWERED TYPES

### IMPROVED LILLIPUT

(Pompon or Baby Zinnias, Special Florists' Strains)  
 The Lilliputs are among the most popular Zinnias for cut flower use. The flowers are small, compact, and symmetrical, on strong stemmed 1½ ft. to 2 ft. plants.

	Tr. Pkt.	Oz.	¼ lb.	Lb.
<b>Canary Gem</b> —Canary yellow	\$.20	\$.75	\$2.50	\$8.00
<b>Crimson Gem</b>	.20	.75	2.50	8.00
<b>Dainty Gem</b> —(New) Center bright Rose pink. Lower petals Flesh pink	.20	.75	2.50	8.00
<b>Golden Gem</b> —Golden orange	.20	.75	2.50	8.00
<b>Lilac Gem</b>	.20	.75	2.50	8.00
<b>Pink Gem</b> —Deep pink	.20	.75	2.50	8.00
<b>Purple Gem</b>	.20	.75	2.50	8.00
<b>Rosebud</b> —Rose pink	.20	.75	2.50	8.00
<b>Salmon Gem</b> —Salmon rose	.20	.75	2.50	8.00
<b>Scarlet Gem</b>	.20	.75	2.50	8.00
<b>Valencia</b> —Burnt orange	.20	.75	2.50	8.00
<b>White Gem</b>	.20	.75	2.50	8.00
<b>Pastel Mixture</b> —delicate shades	.20	.75	2.50	8.00
<b>Finest Mixed</b> —From named varieties	.20	.75	2.50	8.00



Zinnia Linearis

### GIANT CRESTED MIXED

(Howard & Smith)

Full rounded cushiony center surrounded by broad guard petals. Colors predominate in shades of Orange, Orange Scarlet, Yellow, Rose and Crimson. Produce about 60% true to type; and as they are improved will undoubtedly become a cut flower for florist use.

Tr. Pkt., 50c      ¼ oz., \$1.25      Oz., \$4.00

### HAAGEANA DOUBLE (Mexican Hybrids)

The smaller flowers lend themselves to bedding and make a brilliant display. The mixture contains many attractive colors and color combinations.

Tr. Pkt. Oz.  
**Finest Mixed** ..... \$ .30 \$1.50

### HARMONY TYPE (Scabiosa Flowered)

Tr. Pkt. Oz.

<b>Campfire</b> —Vivid intense scarlet	\$.35	\$1.75
<b>Gloaming</b> —(New)—Rich deep orange	.35	1.75
<b>Sunburst</b> —Vivid pure canary yellow	.35	1.75
<b>Mixture</b> —Includes crimson, scarlet, orange, yellow, pink and white	.30	1.50



Zinnia Harmony Type

### SANVITALIA PROCUMBENS

Tr. Pkt. Oz.

<b>Double creeping Zinnia</b> —		
Very dwarf edging plant	\$ .30	\$1.50

### ELEGANS PUMILA DOUBLE

Double, perfectly formed, medium sized flowers with long stems; exceptionally fine for cut flowers. This class is half way between the large flowered and Lilliput types in size of bloom, referred to as Big Type Lilliput.

	Tr. Pkt.	Oz.	¼ lb.
<b>Bright Scarlet</b>	\$.15	\$.50	\$1.50
<b>Canary Yellow</b>	.15	.50	1.50
<b>Crimson</b>	.15	.50	1.50
<b>Flesh</b>	.15	.50	1.50
<b>Golden Yellow</b>	.15	.50	1.50
<b>Pinkie</b> —Rose pink	.15	.50	1.50
<b>Salmon Rose</b>	.15	.50	1.50
<b>Sunshine Tints</b> — (New) — Rich pastel shades	.25	.75	1.50
<b>White</b>	.15	.50	1.50
<b>Choice Mixed</b>	.15	.50	1.50

### STRIATA

Tr. Pkt. Oz.

<b>The Clown</b> —Variegated good for cutting	\$ .50	\$2.00
---	--------	--------

### GALLARDIA FLOWERED (Navajo)

	Tr. Pkt.	Oz.
<b>Finest Mixed</b> — Bi-colors; mellow tones, fine for cutting	\$.25	\$1.25

### GRACILLIMA (Red Riding Hood)

	Tr. Pkt.	Oz.
<b>Deep Scarlet</b> —Miniature red flowers, 1 ft. - 2 ft. free flowering	\$.25	\$ .75

### LILLIPUT TOM THUMB

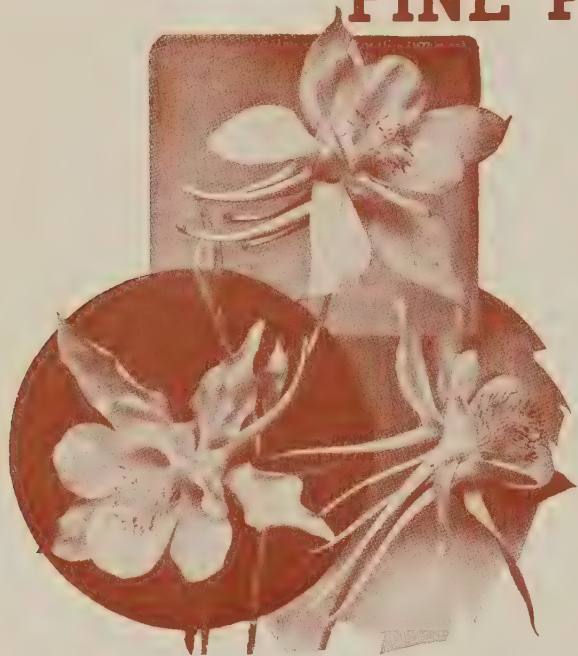
<b>Mixture</b> —Plants 4" - 6", compact with well formed flowers of the Lilliput type. In red, orange, yellow, pink, rose and pastel shades	\$.35	\$1.50
---	-------	--------

### LINEARIS

The single flowers are deep golden orange in color, with a delicate light yellow stripe	\$.35	\$1.50
---	-------	--------



# FINE PERENNIAL SEEDS



Aquilegia Long-Spurred

## ACHILLEA (Millfoil, Yarrow)

Filipendula Parker's Variety—Large yellow showy flower heads.....	1/4 oz. .75	Tr. pkt. \$ .35	Oz. \$2.80
The Pearl—Abundant small white double flowers .....		.35	2.80

## ACONTIUM

Fischeri—Compact. Bright blue flowers .....		.35	2.00
---	--	-----	------

## ADONIS

Vernalis—Large yellow flowers .....		.40	2.50
-------------------------------------	--	-----	------

## AGATHEA

Coelestis (Blue Daisy)—Marguerite like flowers. Fine for Greenhouse.....		.25	1.25
--	--	-----	------

## AGROSTEMMA

Coronaria Atrosanguinea—Deep crimson .....		.15	.30
Coronaria Alba—White .....		.15	.30

## ALYSSUM

Saxatile Compactum—Bright yellow .....		.15	.80
--	--	-----	-----

## AMPELOPSIS

Veitchi (Boston Ivy) .....	per lb., \$2.50		.30
----------------------------	-----------------	--	-----

## ANCHUSA

Italica Dropmore—Gentian Blue .....		Tr. Pkt. .15	Oz. .50
Myosotidiflora—Blue Forgetmenot like flowers .....	1/4 oz. \$2.50	.50	8.00

## ANEMONE CORONARIA (Windflower)

French—(Caen) Varieties fine mixed .....		.25	1.00
His Excellency—Single fiery scarlet .....		.35	1.50

## ANTHEMIS

Kelwayi—Hardy Marguerite. Yellow flowers. Fine for cutting .....		.15	.50
Tinctoria, Perry's Variety—An improved form, of deep golden yellow .....		.25	1.50

## AQUILEGIA

	Tr. pkt.	Oz.
Californica Hybrids—Mixed .....	.30	2.00
Coerulea—Blue .....	.40	2.50
Rose Queen .....	.50	3.50
Long Spurred Blue Shades .....	.35	3.00
Long Spurred Orange & Scarlet Shades .....	.50	3.50
Long Spurred Pink & Rose Shades .....	.35	3.50
Long Spurred Mrs. Scott Elliotts Strain—Best Mixture .....	.50	3.50

## ARABIS

Alpina White—Good for edging and rock gardens .....	.15	.50
---	-----	-----

## ARMERIA

Formosa Hybrida—Various shades of rose pink .....	.25	1.50
---	-----	------

## ASCLEPIA

Tuberosa—Very showy and popular native plant, during July and August bearing flowers of brilliant orange scarlet.....	.35	2.50
---	-----	------

## ASTERS

Alpinus Mixed Varieties .....	.35	2.50
Michaelmas Daisy—Newest varieties mixed .....	.50	3.00

## AUBRIETIA

Large Flowering Hybrids—Blue and rose shades .....	.35	2.50
--	-----	------

## BAPTISIA

Australis (False Indigo)—Dark blue .....	.15	.40
--	-----	-----



Anemone Coronaria

# FINE PERENNIAL SEEDS



*Campanula Persicifolia*

## CAMPANULA

	Tr. Pkt.	Oz.
<b>Calycanthera Blue</b> (Cup and Saucer Type)— Best for cutting .....	\$.25	\$1.50
<b>Calycanthera Lilac</b> (Cup and Saucer Type)— Best for cutting .....	.25	1.50
<b>Calycanthera Pink</b> (Cup and Saucer Type)— Best for cutting .....	.30	2.00
<b>Calycanthera White</b> (Cup and Saucer Type)— Best for cutting .....	.30	2.00
<b>Calycanthera Mixed</b> (Cup and Saucer Type)— Best for cutting .....	.25	1.50
<b>Persicifolia Blue</b> (Peach Bell)—Very hardy.....	.50	
<b>Persicifolia Alba</b> (Peach Bell)—Very hardy.....	.50	
<b>Pyramidalis Alba</b> —Hardy. Good for outdoor or Pot culture .....	.25	1.50
<b>Pyramidalis Blue</b> —Hardy. Good for outdoor or Pot culture .....	.25	1.50
<b>Rotundifolia</b> (Blue Bells of Scotland) — Dainty purple blue flowers, 12" .....	.50	

## CANDYTUFT

<b>Sempervirens</b> (Iberis)—White. Fine for edging.....	\$.25	\$1.50
--	-------	--------

## CARNATION

<b>Early Vienna</b> —Very dwarf .....	\$.30	\$1.75
<b>Grenadin Red</b> .....	.35	2.00
<b>Hardy Border Mixed</b> —Very fine selection .....	.30	1.25

## DAISY—SHASTA (*Chrysanthemum*)

	Tr. Pkt.	Oz.
<b>Alaska</b> —Most popular of all. Large pure white blooms on excellent stems. Starts blooming in June and continues for sometime .....	\$.15	\$1.00
<b>Avalanche</b> —Very free blooming dwarf compact plant (2 ft. high) with large white daisies .....	.25	1.25
<b>Diener's Strain</b> —New development with flowers of very interesting form. They vary considerably from fully double strains, no centers, to semi-doubles and singles. Most have curled and twisted petals. Some have broad petals, others are very slender and twisted.....	.25	

<b>Mayfield Giant</b> —Extremely large flowers measuring three to four inches in diameter. Strong robust growth, 2½ to 3 feet tall.....	\$.25	\$1.00
<b>Spring Marguarite</b> —Large flowers, same characteristics as the Mayfield Giants except habit of growth is six inches to a foot shorter. This variety flowers earlier in the season .....	.20	.50

## DIANTHUS

<b>Deltoides</b> (Maiden Pink)—Deep rose, 8".....	\$.25	\$1.50
<b>Neglectus</b> (Glacier Pink)—Rose, hardy per 1000 seeds, \$3.00 .....		
<b>Plumarius Double Mixed</b> —Hardy garden pinks.....	.25	1.25
<b>Superbus Loveliness</b> —Rosy, lilac, finely fringed, free flowering, plants 12" - 15".....	1.00	
<b>Sweet Wivelsfield</b> —Excellent for cutting. Great variety of colors .....	.25	1.00

## DIGITALIS (Foxglove)

<b>Monstrosa Mixed</b> .....	\$.20	\$.75
<b>The Shirley</b> —Giant hybrids, spotted throats.....	.15	.50

## CENTAUREA

	Tr. Pkt.	Oz.
<b>Montana</b> —blue, 1 ft. - 1½ ft. ....	\$.15	\$.50

## CERASTIUM

<b>Tomentosum</b> —Silvery foliage. White flowers. Excellent for rockeries .....	\$.30	\$1.30
--	-------	--------

## COREOPSIS

<b>Lanceolata Grandiflora</b> —Golden yellow. Good for cutting .....	\$.15	\$.30
<b>Lanceolata Grandiflora Fl. Pl.</b> Double form of above .....	.15	.50
<b>Mayfield Giant</b> —deep golden yellow, large flowers, early .....	.25	1.30
<b>Double Sunburst</b> —Large, golden yellow, fully double flowers .....	.50	2.00



*Dianthus Deltoides*

## FINE PERENNIAL SEEDS DELPHINIUM

### PACIFIC STRAIN (Vetterle & Reinelt)

	Tr. Pkt.	¼ oz	Oz.
<b>Blue Bird Series</b> —Clearest medium blues with white bees	\$1.25	\$4.50	\$14.00
<b>Blue Jay Series</b> —Clear medium to dark blue	1.25	4.50	14.00
<b>Cameliard Series</b> —Pure lavender self with white bee	1.25	4.50	14.00
<b>Round Table Series</b> —This group combines all the newest color developments	1.25	4.50	14.00
<b>Black Knight</b> —Dark purple heavy velvety texture	1.25	4.50	14.00
<b>Galahad Series</b> —Pure white	1.50	5.00	16.00
<b>Guinevere Series</b> —Light pink lavender self with white bee	1.25	4.50	14.00
<b>Percival Series</b> —(New)—White with black bee	2.00	7.00	24.00

	Tr. Pkt.	¼ oz	Oz.
<b>Summer Skies Series</b> —Clearest blue with white bee	\$1.25	\$4.50	\$14.00

### STANDARD COLORS

<b>Lavender Pastel Shades</b> —Contain lavender—lavender pastel and lilac	1.00	3.50	12.00
<b>Dark Pastel Shades</b> —Contain dark violet, light violet and blueviolet	1.00	3.50	12.00
<b>Light Blue Shades</b>	1.00	3.50	12.00
<b>Dark Blue Shades</b>	1.00	3.50	12.00
<b>White</b>	1.00	3.50	12.00
<b>Pacific Hybrids Mixed</b>	1.00	3.50	12.00

### OTHER STRAINS

	Tr. Pkt.	Oz.
<b>Clividen Beauty</b> —(Belladonna Improved)—Select strain. Turquoise blue	\$.40	\$2.25
<b>Bellamosum</b> —Dark blue	.40	2.25
<b>Blackmore &amp; Langdon Strain</b> —Immense flowers. Fine mixture of blue shades	.50	3.00
<b>Gold Medal Hybrids</b> —Splendid mixture	.25	1.50
<b>Wrexham Strain</b> —Celebrated English Hollyhock strain	.50	5.00

### EUPATORIUM

<b>Fraseri</b> —(Hardy Ageratum)—White. Fine for cutting	\$.25	\$1.00
--	-------	--------

### GAILLARDIA

<b>Burgundy</b> —Coppery scarlet self	\$.30	\$2.00
<b>Dazzler</b> —Large rich red flowers with orange tip. Fine for cutting	.25	1.50
<b>Goblin</b> —(New)—Dwarf, compact	.50	
<b>Portola Hybrids</b> —Red with golden tips. Excellent for cutting	.25	1.50
<b>Tangerine</b> —True Tangerine color. Good for cutting	.25	1.60

### GENTIANA

<b>Acaulis</b> —Deep blue Good for rockeries	\$.50	\$3.00
--	-------	--------

### GEUM

	Tr. Pkt.	Oz.
<b>Mrs. Bradshaw</b> —Brilliant scarlet. Double flowers. Good for cutting	\$.25	\$1.75
<b>Lady Stratheden</b> —Double golden yellow. Excellent for cutting	.25	1.75

### GYPSOPHILA

<b>Paniculata</b> —(Single)—Hardy, Graceful sprays of white flowers	\$.15	\$.40
<b>Pacifica</b> —Rose, 4 ft., blooms when paniculata varieties have passed. Excellent for cutting	.25	2.50
<b>Repens Rosea</b> —Light rose, 6", fine rock plant	.25	2.50
<b>Repens White</b> —6 ft., fine rock plant	.25	1.50

### HELIANTHEMUM

<b>Mutabile</b> —(Dwarf Sun Rose)—Excellent rock plant, 8" - 12", pastel mixture	\$.25	\$.80
--	-------	-------

### HEUCHERA

<b>Sanguinea</b> —Fine for cutting..... 1/8 oz.	\$1.50	\$5.00
<b>Sanguinea Rosea</b> —Beautiful rose pink. Fine for cutting	.50	

### HIBISCUS

<b>Giant Mallow Marvel Mixed</b> —Very showy. 4 ft. tall. Good for perennial border	\$.15	\$.50
---	-------	-------





**LYCHNIS**

*Chalcedonica*—Scarlet flowers ..... Tr. Pkt. Oz. \$ .15 \$ .40

**PENTSTEMON**

*Sensation*—Mixed colors. 3 ft. tall ..... .35 2.80  
*New Hybrids Mixed*—Improved type ..... .50 2.00

**PHYSOSTEGIA**

*Virginica*—Pink. 4 ft. tall. Fine for cutting ..... .35 2.00  
*Virginica Alba*—White form of above ..... .35 2.00

**PLATYCODON**

*Mariesi*—Dwarf. Dark blue ..... .35 2.50

**POPPY**

*Coonara Pink Shades*—Fine strain. Pink art shades. Long stems ..... .35 2.00  
*Nudicaule El Monte* — Tangerine orange. Excellent for cutting ..... .25 2.00  
*Oriental Scarlet*—Deep red ..... .15 1.00  
*Oriental Hybrids Mixed* ..... .20 1.50

**PYRETHRUM**

*Roseum Pink*—Pink shades. Fine for cutting ..... .35 2.00  
*Hybridum Single Mixed*—Good cut flower ..... .30 1.50  
*Hybridum Double Mixed*—Good cut flower ¼ oz., \$2.00. .... .50

**RUDBECKIA**

*Hirta Autumn Tints*—Bronze autumn shades ..... .35 2.00

**SCABIOSA**

*Caucasica Isaac House Hybrids*—Improved strain. Flowers range from lavender to dark blue. Excellent for cutting ..... .50 3.00  
*Caucasica Lavender*—Good cut flower ..... .35 2.50

**STATICE**

*Caspia*—Lilac. Fine for table decoration..... .40 2.25  
*Dumosa*—Silvery gray flowers. Good cut flower ..... .25 1.75  
*Latifolia*—Deep blue flowers. Fine for cutting ..... .25 1.50

**STOKESIA**

*Cyanea*—(Corn Flower Aster)—Lavender blue. Excellent for cutting ..... .25 1.40

**SWEET WILLIAM**

*Single Mixed* ..... .15 .60  
*Double Mixed* ..... .15 .70  
*Dwarf Alpinus Midget Mixed* — Early flowering type of Sweet William, consisting of light and dark colors mixed. Height 4 to 6 inches. Suitable for border or rock garden planting. ¼ oz., \$1.00. .... .40 3.50

**FINE PERENNIAL SEEDS**

**HOLLYHOCK—Chaters Double**

	Tr. Pkt.	Oz.		Tr. Pkt.	Oz.
Pink	..... \$ .25	\$1.25	White	..... \$ .25	\$1.25
Rose Pink	..... .25	1.25	Yellow	..... .25	1.25
Scarlet	..... .25	1.25	Maroon	..... .25	1.25
Chamois	..... .25	1.25	Newport Pink	..... .25	1.25
Salmon	..... .25	1.25	Mixed	..... .25	1.00

**LAVANDULA—Sweet Lavender**

*Vera*—Well-known, fragrant hardy perennial. Always in good demand ..... .25 .80

**LIATRIS**

*Pycnostachia*—Rosy purple. Fine for cutting ..... .35 2.50

**LINUM**

*Perenne*—(Flax)—Blue. 1½ ft. tall ..... .15 .40  
*Flavum*—Yellow. 2 ft. tall ..... .25 2.00

**TRITOMA**

*Hybrids*—(Red Hot Poker) ..... .25 1.50

**TUNICA**

*Saxifraga*—Rose, 6" ..... .15 .50

**VERONICA**

*Spicata*—Bright blue. Fine for bouquets ..... .35 1.50

**VIOLA CORNUTA**

*Apricot*—Large-flowered true apricot. Very good variety ..... .35 4.00  
*Arkwright Ruby, Hybrid* — Wonderful large rounded flowers of ruby crimson with terra cotta and darker markings. Fragrant ..... .50 6.50  
*Blue Perfection*—Large flowered fine light blue ..... .35 2.00  
*Jersey Gem*—Deep Cattleya ..... .75  
*Lutea Splendens*—Golden yellow ..... .35 2.00  
*Papilio*—Light blue ..... .35 2.00  
*Puck* — Upper half purple, lower half yellow, very pretty ..... .35 2.25





# VEGETABLE SEEDS

**W**ITH increasing transportation difficulties, the burden of young vegetable plant production, may be gradually shifted to the Northern greenhouse men. It may be good judgment, as well as a patriotic duty, to devote as much space to this production as possible. As the war continues, the country will naturally become more food conscious, and the demand for small vegetable plants is bound to be on the increase.

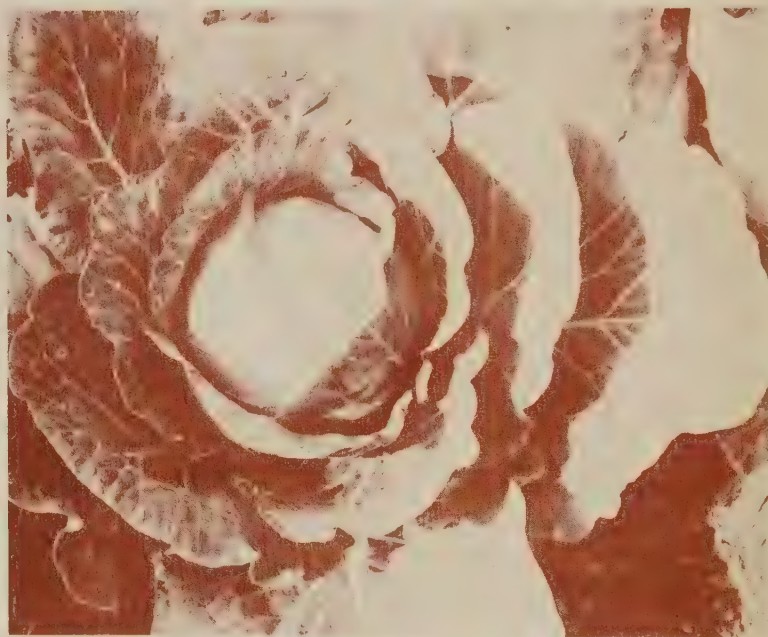
Our Vegetable seed is selected with the same diligent care that we use in selecting Flower seeds. These strains have been chosen for their quality, thereby assuring your customers of the best.

## B E E T S

	Oz.	¼ Lb.	Lb.
<b>CROSBY'S EGYPTIAN:</b> Early dark red with excellent quality .....	\$ .20	\$ .75	\$1.90
<b>DETROIT DARK RED:</b> Most popular globe shaped home and market garden variety .....	.25	.90	2.25

## C A B B A G E

	Oz.	¼ Lb.	Lb.
<b>EARLY JERSEY WAKEFIELD:</b> The earliest oblong variety. Sure header, small heads, suitable for home gardens.....	.45	1.35	4.00
<b>GOLDEN ACRE (Resistant):</b> The earliest resistant cabbage developed. A SOLID ROUND HEAD OF MEDIUM SIZE .....	.55	1.75	5.00
<b>COPENHAGEN MARKET:</b> Early, round headed variety, Excellent quality .....	.50	1.75	5.00
<b>WISCONSIN ALL SEASON:</b> A main crop yellow resistant cabbage. Round head, good quality .....	.45	1.50	4.25
<b>MARION MARKET (Resistant):</b> A resistant Copenhagen Market matures a trifle later .....	.60	1.85	5.75
<b>PREMIUM (LATE) FLAT DUTCH:</b> Large late variety. Very good quality, excellent keeper .....	.35	1.00	3.00
<b>DANISH BALL HEAD:</b> Most popular late variety. Good keeper .....	.60	2.00	6.00



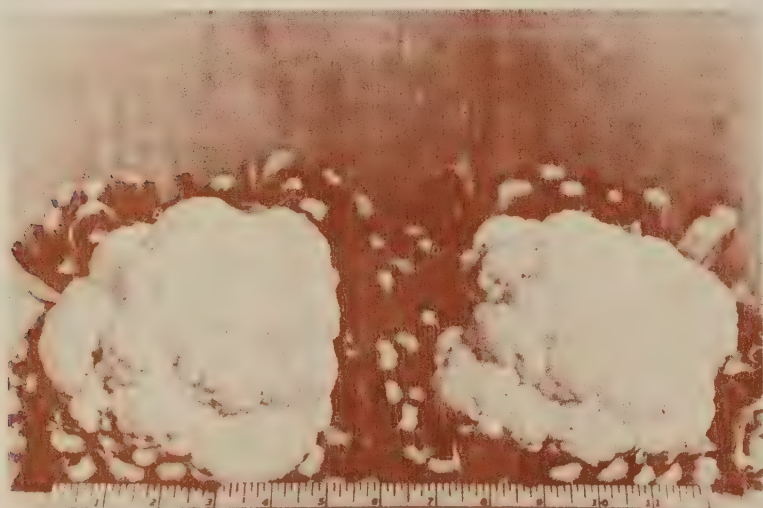
*Cabbage Marion Market*

## C A U L I F L O W E R

	Oz.	¼ Lb.	Lb.
<b>DWARF ERFURT:</b> An extra early variety, dwarf-habit and fine grain .....	4.00	14.00	
<b>SNOWBALL:</b> A very dependable home and market garden variety .....	4.00	14.00	
<b>DANISH GIANT, DRY WEATHER:</b> A dependable variety of finest quality .....	4.00	14.00	

## C A R R O T

<b>DANVERS HALF LONG:</b> Bright orange 6 to 7 inches long. Fine flavor, very tender	.50	1.50	5.00
<b>CHANTENAY HALF LONG:</b> Orange scarlet 5 to 6 inches long, tender and fine grained	.50	1.50	5.00



**CELERY**

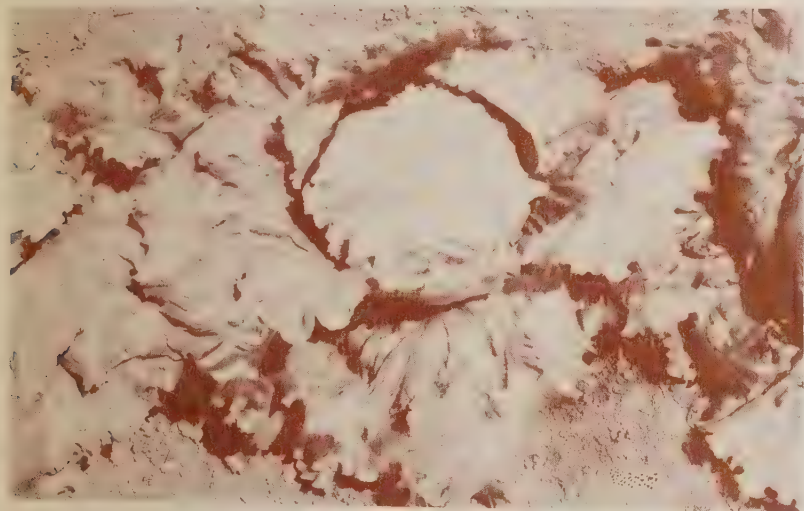
	Oz.	¼ Lb.	Lb.
<b>GOLDEN SELF BLANCHING:</b> Standard early market variety .....	\$ .70	\$2.50	
<b>GOLDEN PLUME:</b> Early, non-bolting variety. Fine flavor, solid and tender .....	.85	3.00	
<b>EMPEROR:</b> Dwarf growing, very brittle and of excellent flavor. Good winter keeper .....	.70	2.50	
<b>GIANT PASCAL:</b> Stems thick, of fine quality rich nutty flavor. An excellent variety .....	.70	2.50	

**CUCUMBER**

<b>DAVIS PERFECT:</b> Good greenhouse variety. Fine for slicing .....	.40	1.35	
<b>STRAIGHT 8:</b> Fine dark green color. Grows 8 inches long by about 1½ inches in diameter .....	.30	1.00	

**EGG PLANT**

<b>BLACK BEAUTY:</b> An extra early, large variety with few seeds .....	.55	1.75	6.00
<b>IMPROVED NEW YORK PURPLE:</b> Popular home and market garden variety .....	.55	1.75	6.00



*Lettuce*

**LETTUCE**

<b>BLACK SEEDED SIMPSON:</b> Ideal mid summer leaf variety, will withstand heat and drought .....	.20	.60	2.00
<b>GRAND RAPIDS FORCING:</b> The leading greenhouse forcing leaf variety, but may be grown successfully outdoors..	.20	.60	2.00
<b>BIG BOSTON:</b> A large headed variety for mid-summer and fall use .....	.20	.60	2.00
<b>NEW YORK 12:</b> An early sure heading strain adopted to warmer weather. Forms flat heads with light green leaves .....	.25	.65	2.25

**PEPPER**

<b>CALIFORNIA WONDER:</b> (Sweet.) Much used, particularly by market growers. Large green fruits practically as early as Ruby King .....	.65	2.00	
<b>CHINESE GIANT:</b> (Sweet.) The largest sweet pepper. Roundish, blunt, mild and sweet throughout. Deep green changing to deep scarlet .....	.50	1.75	
<b>CRIMSON GIANT:</b> (Sweet.) Very mild popular home and garden variety .....	.50	1.75	
<b>HARRIS EARLY GIANT:</b> (Sweet.) The best very early pepper for home and market gardens. Large fruits, slightly tapered. Deep green changing to bright red .....	.50	1.75	
<b>HUNGARIAN YELLOW WAX:</b> (Hot.) Yellow very early. Fruits long, tapered. Waxy light yellow .....	.65	2.00	

<b>CAYENNE LONG RED:</b>	Oz.	¼ Lb.
(Hot.) A leading sort for use in pickles, for canning and for drying. Fruits long, tapered, and very pungent .....	.45	1.35

<b>PIMENTO:</b>	Oz.	¼ Lb.
(Sweet.) Standard variety for home and market garden. Fruits heart-shaped and very smooth .....	.45	1.35

<b>RUBY KING:</b>	Oz.	¼ Lb.
(Sweet.) A favorite for home and market garden. Fruits large and slightly tapered. Bright red .....	.50	1.50

<b>WORLD BEATER:</b>	Oz.	¼ Lb.
(Sweet.) An early sort. Fruits large, oblong; flesh thick and sweet. Bright red .....	.50	1.50

<b>SWEET YELLOW:</b>	Oz.	¼ Lb.
(Sweet.) Skin golden yellow, flesh thick and bright yellow .....	.65	2.00



*Pepper World Beater*

## RADISH

	Oz.	¼ Lb.	Lb.
<b>IMPROVED SCARLET GLOBE:</b> Very early sort, valuable for out of door culture and for forcing. Uniform rich bright, scarlet, flesh white .....	\$ .15	\$ .35	\$1.00
<b>SCARLET TURNIP, WHITE TIP:</b> Popular variety, small top. Root bright scarlet with white area about the tip .....	.15	.35	1.00
<b>WHITE ICICLE:</b> The best early white variety. Roots long, tapered, very white throughout.....	.15	.35	1.00

## SPINACH

<b>BLOOMSDALE OR NORFOLK:</b> Savory leaved. Standard sort with glossy green leaves of splendid quality .....	.20	.60	1.50
---	-----	-----	------

## TOMATO

	Oz.	¼ Lb.	Lb.
<b>BONNEY BEST:</b> (73 days) A general purpose tomato. Fruits evenly colored scarlet-red, medium large .....	.45	1.25	5.00
<b>BREAK O'DAY:</b> (73-75 days) Early wilt resistant, globe-shaped sort. Fruits large, scarlet of good quality .....	.50	1.50	5.50
<b>CHALK'S EARLY JEWEL:</b> (75 days) Very thrifty, heavy producer. Fruits scarlet-red, large and firm .....	.45	1.25	5.00
<b>DWARF STONE:</b> (82 days) Strictly dwarf and tree like, require no training. Fruits bright red, medium sized .....	.50	1.50	5.50
<b>EARLIANA:</b> (64-66 days) Particularly valuable for home garden and early market. Fruit medium size, flattened globe shape scarlet red .....	.55	1.75	6.00
<b>GLOBE:</b> Livingston's (81 days) Heavy producer. Fruits purplish pink, large globe shape, scarlet red .....	.50	1.50	5.50



Tomato Rutgers

	Oz.	¼ Lb.	Lb.
<b>GREATER BALTIMORE:</b> (83 days) Similar to Stone and particularly valuable for canning .....	.40	1.15	4.00
<b>JOHN BAER:</b> (73 days) Very similar in every respect to Bonny Best .....	.45	1.25	4.50
<b>MARGLOBE:</b> (75-78 days) Resistant to Fusarium Wilt. Fruits uniform deep scarlet, globe shape and of distinct quality .....	.40	1.15	4.00
<b>MASTER MARGLOBE:</b> (75-78 days) HIGHLY resistant and heavily productive .....	.50	1.25	4.50
<b>MICHIGAN STATE FORCING:</b> Developed at Michigan State College. Very productive under restricted light conditions. Fruits deep scarlet, globe shaped are borne in clusters of five to eleven .....	1.50		
<b>PONDEROSA:</b> (85 days) One of the best for home use. Fruits purplish-pink, very fleshy with few seeds of very mild flavor.....	.65	2.00	
<b>PRITCHARD:</b> (Scarlet Topper) Wilt resistant, heavily productive. Fruits large, globular, scarlet and well colored about the stem .....	.50	1.50	5.00
<b>RUTGERS:</b> (78 days) Highly recommended for second early maturing variety for canning and tomato juice. Fruits similar in shape to Marglobe. Uniformly colored flesh .....	.50	1.50	5.00
<b>STOKESDALE:</b> (70-73 days) Early suitable for shipping. Fruits uniform, deep scarlet, globe shape .....	.50	1.50	5.00
<b>STONE IMPROVED:</b> (85 days) Very solid fruit scarlet red, flat shape .....	.55	1.75	

The number of days indicates the length of time from date of planting in the open to time of ripening.

## TURNIP

<b>EARLY WHITE TURNIP:</b> Very early, standard for home and market garden .....	.15	.30	.80
<b>PURPLE TOP WHITE GLOBE:</b> Standard for table use and splendid for field culture .....	.15	.30	.80



FROM \_\_\_\_\_

\_\_\_\_\_

\_\_\_\_\_

Fred C.  
*Gloeckner*  
&  
Company,  
Incorporated

15 East 26th Street  
New York City







# Insecticides and Fungicides

## ARSENATE OF LEAD

The standard spray or dust for all leaf eating insects.

1 lb., 35c—4 lbs., 90c—24 lbs., \$4.50

## BORDEAUX MIXTURE (Dry)

Most effective fungicide for blight, leaf spot and other fungus diseases.

1 lb., 30c—4 lbs., 90c—48 lbs., \$8.50

## CYANOGAS-CALCIUM CYANIDE G. FUMIGANT

Cheapest fumigant on the market. Controls White Fly, Aphids, Mealy Bugs, and crop destroying rodents.

5 lbs., \$3.00—25 lbs., \$10.00

## D.N. SULPHUR DUST No. 10

Very effective control for Red Spider, Thrips and Rust on carnations.

10 lbs., \$3.50—50 lbs., \$12.50

## D.N. SULPHUR DUST No. 12

Controls Red Spiders and Mites on Roses, Snapdragons and carnations.

10 lbs., \$4.50—50 lbs., \$20.00

## GRASSELLI SPREADER

Combined spreader and sticker.  
Gallon, \$4.95—5 gallons, \$23.00

## HITOX (Toptox)

Effective double acting insecticides. Controls Red Spider, Mite, Thrip, etc. Will not burn.

Gallon, \$9.75

## LIQUID FULEX

No. 400 recommended for Carnations.  
No. 300 for more tender plants.  
Gallon, \$10.00

## LORO

Very effective for most Chrysanthemum and Carnation insects.

Gallon, \$10.50—5 gallons \$45.00

## MULTICIDE

Pyrethrum spray, containing activator.  
1 gal., \$10.45—5 gals., \$47.00

## NICO-FUME LIQUID

For fumigating or spraying — contains 40% nicotine.

8 lbs. (approx. 1 gal.) \$11.25  
40 lbs., \$45.75

## NICO-FUME PRESSURE FUMIGATOR

1/2 lb. cans — 12 cans \$4.45  
1 lb. cans — 12 cans \$7.40

## PARIS GREEN (Powder)

1 lb., 55c—5 lbs., \$2.35—14 lbs., \$6.10

## RED ARROW

Effective spray for chewing and sucking insects.

1 gal., \$11.35—Cases of 6 gallons, \$66.00

## SELOCIDE

Kills Red Spider.

1 gal. \$3.00—5 gals., \$13.50

## SULPHUR—FOR DUSTING

(Flowers of Sulphur)

10 lbs., \$1.00—100 lbs., \$4.95

## TATER EMETIC

Spray for control of Thrips.

10 lbs., \$8.50—100 lbs., \$75.00

## TOBACCO DUST

Very fine dust.

100 lbs., \$3.50—Ton, \$65.00

## TO-NA-CIDE

Patent No. 1941055.

10 lbs., \$2.00—25 lbs., \$4.00—50 lbs., \$7.00

# ELECTRA

Fertilizer 4-9-3

The Finest General All Around Plant Food That America Has Ever Known

Feeding Forcing Finishing

HIGH ORGANIC

IT MAKES PLANTS FUNCTION PROPERLY

Used by Leading Florists

100 lbs., \$6.75

Single bags are quoted at the ton price.

Freight allowed on ton orders.

## COMMERCIAL FLOWER FORCING

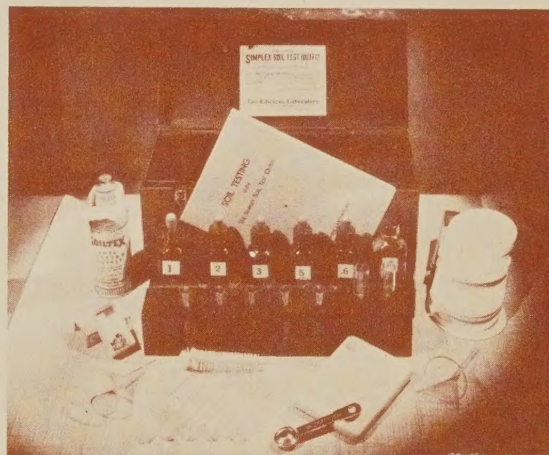
LAURIE & POESCH



The fundamentals and their practical application to the culture of Greenhouse Crops.

A book that should be in every florist establishment.

Price \$4.50



## EDWARD'S SIMPLEX SOIL

### TESTING OUTFIT

A simple but complete outfit for the accurate chemical diagnosis of soil needs. Built up from the soil testing system developed in the Soils Department of Michigan State College.

With this equipment the user can determine easily, quickly and accurately just what fertilizing chemicals any soils contain in a form available for plant use. Also whether there are any substances in the soil which are poisonous to plant growth. Knowing what fertilizers are required for any crop, it can readily be judged what treatment any soils should receive to make them most productive.

This exact knowledge will save more than the cost of the outfit in a short time. It is wise economy to find out what soils contain before spending money for fertilizers or other chemical treatments that may not be needed.

Simplex Outfit  
\$22.00

Junior Outfit  
\$13.75

